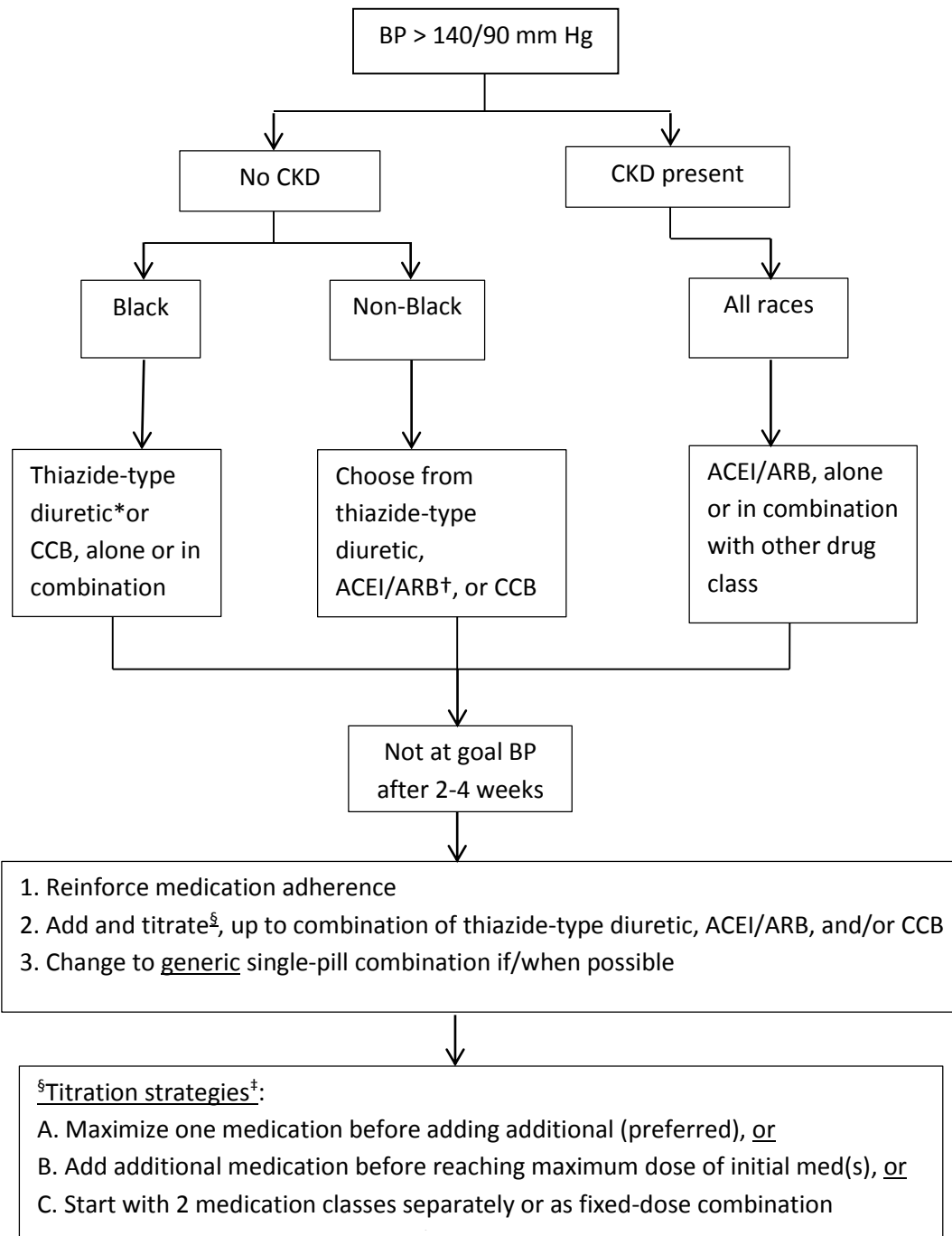


Heart Health Now Hypertension Treatment



Notes:

For all patients, monitor appropriate labs (e.g., Na⁺, K⁺, Cr) as indicated

*Favor chlorthalidone if not planning on combining HCTZ with an ACEI or ARB

†Do not use ACEI and ARB together

‡ Once patient is titrated and on thiazide-type diuretic, CCB, and ACEI/ARB, (or if cannot tolerate an agent among these), choose from β -blocker, spironolactone, or direct vasodilator as next options