



AGENCY FOR HEALTHCARE RESEARCH AND QUALITY



AHRQ
Agency for Healthcare
Research and Quality



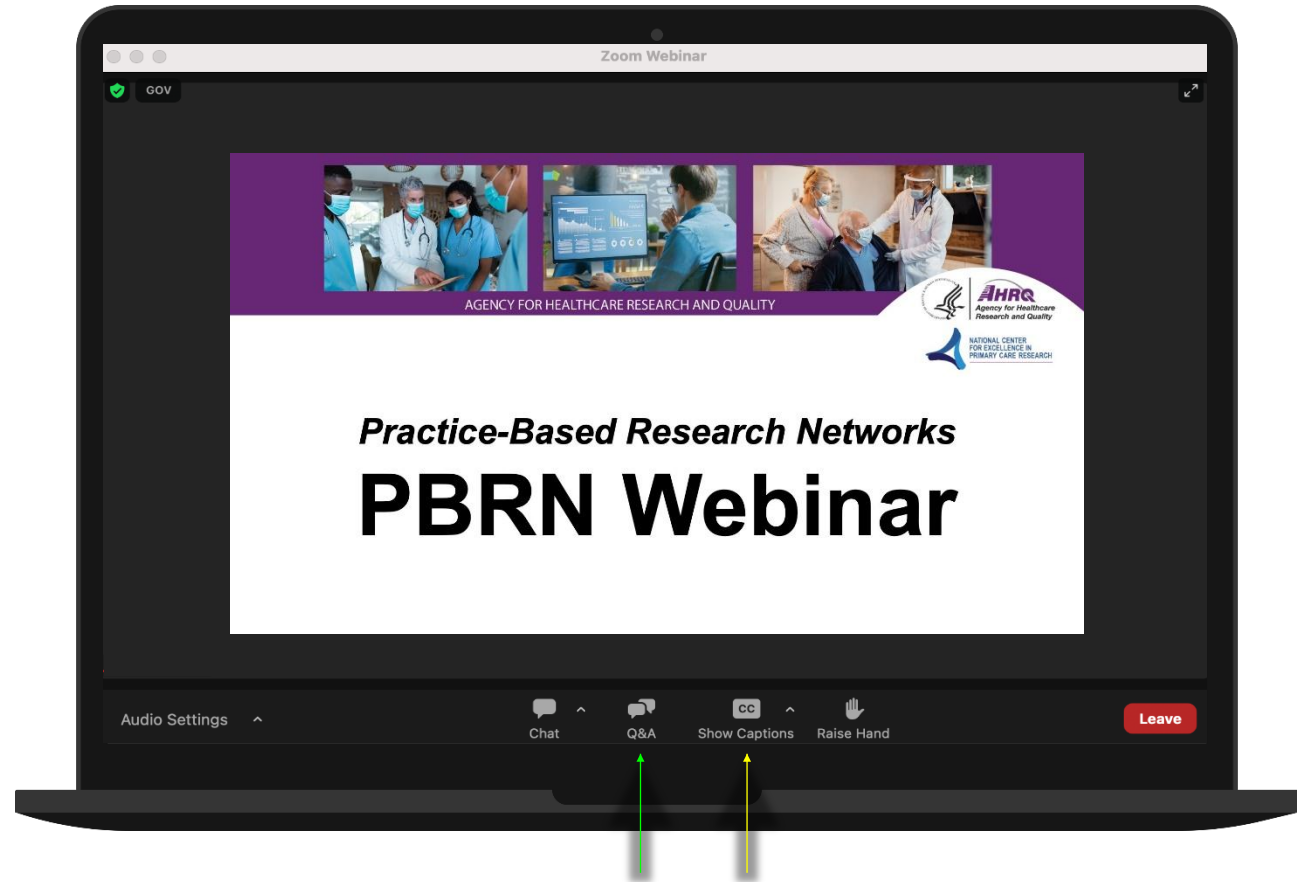
NATIONAL CENTER
FOR EXCELLENCE IN
PRIMARY CARE RESEARCH

Managing and Growing an Established PBRN

June 20, 2024
4 p.m. – 5 p.m. EDT

Housekeeping and Logistics

- **Closed Captioning** is available through Zoom.
- If you have questions for the panelists, submit them in the **Q&A** tool in Zoom.
- This webinar is being recorded and will be posted on AHRQ's website.



Aimee R. Eden, Ph.D., M.P.H.



Aimee Eden is Acting Director of AHRQ's National Center for Excellence in Primary Care Research. She is a medical anthropologist and qualitative researcher with a background in public health and international development. Prior to joining AHRQ in 2022, Dr. Eden was a Senior Research Scientist conducting mixed-methods primary care research at the American Board of Family Medicine.

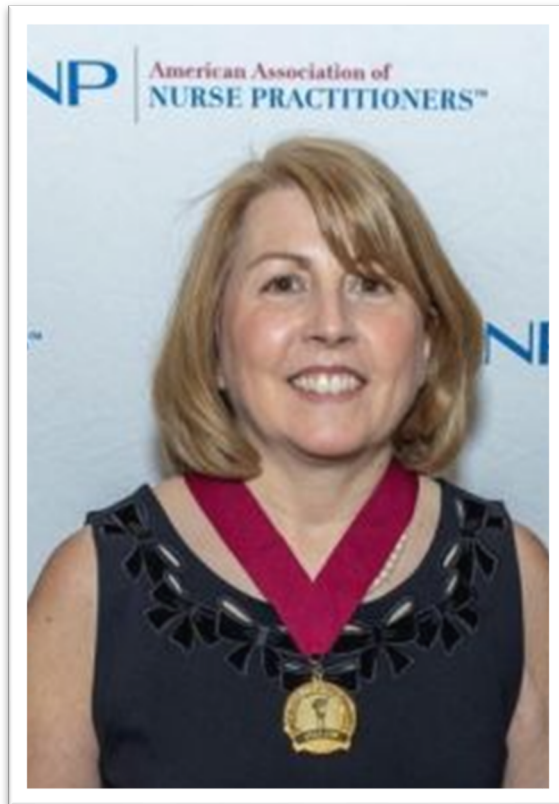


Panel Discussion Topics



- Infrastructure.
- Funding.
- Relationships with clinical practices.
- Partnerships with other Practice-Based Research Networks (PBRNs) and external investigators.
- Governance.

Maureen Boardman, M.S.N., FNP-C, FAANP



Maureen Boardman is the Clinical Research Director of the Northern New England CO-OP Practice and Community Based Research Network, the oldest primary research network in the country. She has been an active member of the CO-OP for 20 years. She is a Clinical Assistant Professor of Community and Family Medicine at Geisel School of Medicine at Dartmouth and practices clinically at Little Rivers Health Care, where she is the Director of Research and Clinical Quality.

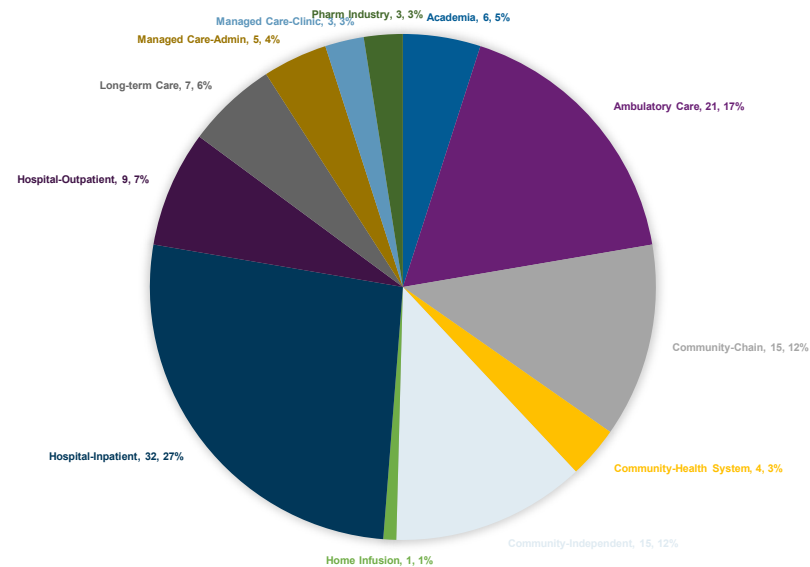
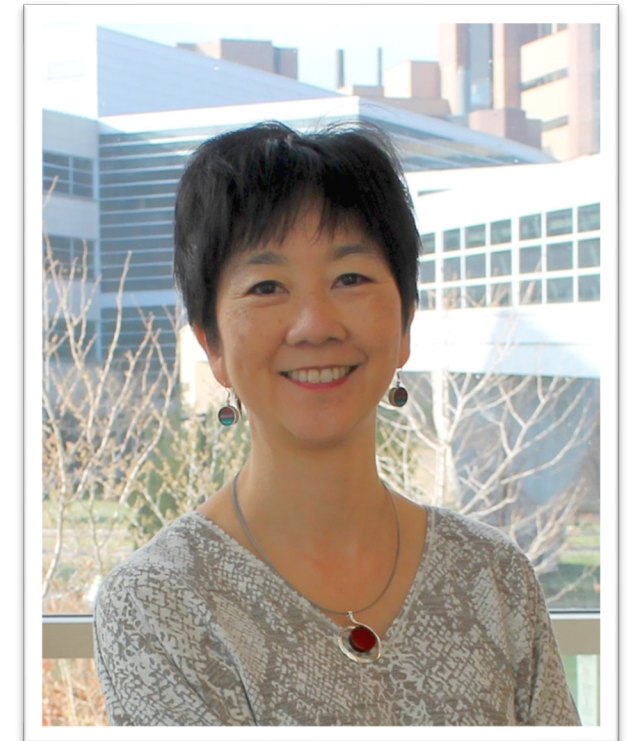
Michelle Chui, Pharm.D., Ph.D.

PBRN: PearlRx – Wisconsin’s Pharmacist PBRN

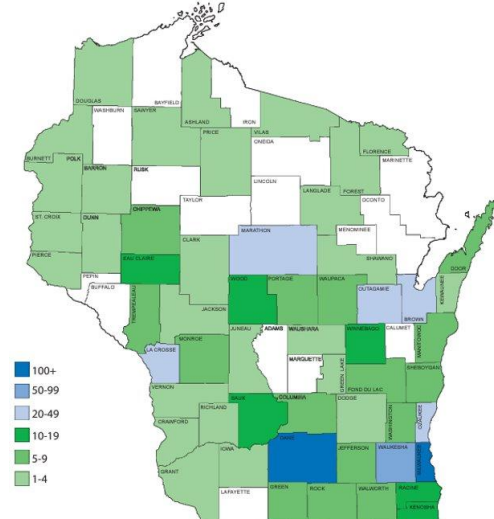
Location: Madison, WI

PBRN Experience: Faculty Director since 2017.

Research Interests: Medication safety in the outpatient setting, reducing health disparities in underserved populations.



900 practicing pharmacists in 58/72 WI counties



Christy J. W. Ledford, Ph.D., FACH

PBRN: HamesNet

Location: Georgia

PBRN Experience: Director of HamesNet since 2021; research director of the Military Primary Care Research Network from 2014 to 2020.

Research Interests: Community engagement and community-led research, translational science, dissemination, primary care workforce development.



**Hames
Net**



CRANE
HamesNet

Co-creating with communities



CHART
HamesNet

Translating science to practice



CADRE
HamesNet

*Preparing physicians to
apply emerging evidence*

Joy H. Lewis, D.O., Ph.D.

PBRN: A.T. Still University, School of Osteopathic Medicine in Arizona PBRN

Location: Mesa, AZ (and at Federally qualified health centers across the United States)

PBRN Experience: Founded PBRN in 2012.

Research Interests: Founded the [National Center for Community Health Research](#).

- Research alliance with the National Association of Community Health Centers.
- Value-based care with an emphasis on social determinants of health for patients and communities served by health centers.
- Implement and evaluate programs with focus on quintuple aim.
- Community-oriented primary care projects are based on CHC and community needs—always partner with community.



PBRN Learning Series



Highlighting and Promoting the Value of PBRNs



Join webinar presenters from a variety of PBRNs who will share examples from their own experience on the various and unique ways that PBRNs contribute to improving the delivery of primary care.

July 11, 2024, 4 p.m. to 5 p.m. EDT

Register: <https://www.ahrq.gov/ncepcr/communities/pbrn/learning-series/index.html>

E-Learning Course: Building a New PBRN



This course provides a variety of information and resources for anyone involved in setting up and growing a PBRN, such as recruiting and retaining practices, research considerations (including Institutional Review Boards), and business and funding tips.

To be published on the AHRQ website August 2024.

Feedback Request: Managing and Growing an Existing PBRN



<https://forms.office.com/r/xrwC0eD7d5>