

Text Description for PCPI eSpecification

Clinical Topic	Maternity Care
Measure Title	Post-Partum Follow-Up and Care Coordination
Measure #	MC-10
Measure Description	Percentage of patients, regardless of age, who gave birth during a 12-month period who were seen for post-partum care within 8 weeks of giving birth who received a breast feeding evaluation and education, postpartum depression screening, post-partum glucose screening for gestational diabetes patients, and family and contraceptive planning
Measurement Period	12 consecutive months
Initial Patient Population	All patients, regardless of age, who gave birth during a 12-month period seen for post-partum care visit before or at 8 weeks of giving birth
Denominator Statement	Equal to Initial Patient Population
Denominator Exclusions	None
Numerator Statement	<p>Patients receiving the following at a post-partum visit:</p> <ul style="list-style-type: none"> • Breast feeding evaluation and education, including patient-reported breast feeding • Post-partum depression screening • Post-partum glucose screening for gestational diabetes patients and • Family and contraceptive planning <p>Breast Feeding Evaluation and Education: Patients who were evaluated for breast feeding before or at 8 weeks post-partum</p> <p>Post-Partum Depression Screening: Patients who were screened for post-partum depression before or at 8 weeks post-partum. Questions may be asked either directly by a health care provider or in the form of self-completed paper- or computer administered questionnaires and results should be documented in the medical record. Depression screening may include a self-reported validated depression screening tool (eg, PHQ-2, Beck Depression Inventory, Beck Depression Inventory for Primary Care, Edinburgh Postnatal Depression Scale (EPDS))</p> <p>Post-Partum Glucose Screening for Gestational Diabetes: Patients who were diagnosed with gestational diabetes during pregnancy who were screened with a glucose screen before or at 8 weeks post-partum</p> <p>Family and Contraceptive Planning; Patients who were provided family and contraceptive planning and education (<i>including contraception, if necessary</i>) before or at 8 weeks post-partum</p> <p>*To satisfactorily meet the numerator – ALL components must be performed</p>
Denominator Exceptions	None

**MATERNITY CARE
Data Requirements for PCPI eSpecification**

Measure #10: Post-Partum Follow-Up and Care Coordination

Measure Components	QDM* Standard Category	QDM* Data Type	Value Set Name	Standard Terminology	OID	Constraints	Comments/Rationale
Supplemental Data Elements	Individual Characteristic	Patient Characteristic	Age at Delivery	LOINC	2.16.840.1.113883.3.526.2.1434	during [Attribute, stop datetime: Date of Delivery]	There are no restrictions on age for inclusion in the measure; this data element is included for result stratification to identify disparities.
	Individual Characteristic	Patient Characteristic	Gender	HL7 (2.16.840.1.113883.5.1)	2.16.840.1.113883.1.11.1	during measurement period	This data element is collected for the purpose of stratifying results in an effort to highlight disparities.
	Individual Characteristic	Patient Characteristic	Race	CDC	2.16.840.1.114222.4.11.836	during measurement period	This data element is collected for the purpose of stratifying results in an effort to highlight disparities.
	Individual Characteristic	Patient Characteristic	Ethnicity	CDC	2.16.840.1.114222.4.11.837	during measurement period	This data element is collected for the purpose of stratifying results in an effort to highlight disparities.
	Individual Characteristic	Patient Characteristic	Preferred Language	CDC	2.16.840.1.114222.4.11.831	during measurement period	This data element is collected for the purpose of stratifying results in an effort to highlight disparities.
	Individual Characteristic	Patient Characteristic	Payer	Source of Payment Typology	2.16.840.1.113883.221.5	during measurement period	This data element is collected for the purpose of stratifying results in an effort to highlight disparities.
	Individual Characteristic	Patient Characteristic	Gender of Newborn	HL7 (2.16.840.1.113883.5.1)	2.16.840.1.113883.1.11.1	during [Attribute, stop datetime: Date of Delivery]	This data element is collected for the purpose of stratifying results in an effort to highlight disparities. This data will be found in the mothers record, specifically found in the delivery record.
Attribute	Attribute: Result	Present "X"	n/a	n/a	n/a	n/a	This attribute is applied to the value set 'Gender of Newborn'.
Initial Patient Population	Measure Timing	n/a	Measurement Start Date	n/a	n/a	TBD by measure implementer	
	Measure Timing	n/a	Measurement End Date	n/a	n/a	TBD by measure implementer	
	Procedure	Procedure, Performed	Vaginal Delivery	GROUPING CPT SNOMED-CT	2.16.840.1.113883.3.526.3.1341 2.16.840.1.113883.3.526.2.1411 2.16.840.1.113883.3.526.2.1412	during measurement period	
	Procedure	Procedure, Performed	Cesarean Section Delivery	GROUPING CPT SNOMED-CT	2.16.840.1.113883.3.526.3.1342 2.16.840.1.113883.3.526.2.1413 2.16.840.1.113883.3.526.2.1414	during measurement period	
	Attribute	Attribute: stop datetime	Date of Delivery	n/a	n/a	n/a	This data element is the date associated with "Procedure, Performed: Vaginal Delivery" or "Procedure, Performed: Cesarean Section Delivery".
	Encounter	Encounter, Performed	Postpartum Care Visit	GROUPING SNOMED-CT	2.16.840.1.113883.3.526.3.1340 2.16.840.1.113883.3.526.2.1410	<= 56 days starts after end of [Attribute, stop datetime: Date of Delivery]	
Denominator	Equals Initial Patient Population						
Denominator Exclusions	None						
Numerator	Intervention	Intervention, Performed	Evaluation of Breast Feeding	GROUPING SNOMED-CT	2.16.840.1.113883.3.526.3.1397 2.16.840.1.113883.3.526.2.1498	during [Encounter, Performed: Postpartum Care Visit]	
	Intervention	Intervention, Performed	Breast Feeding Education	GROUPING SNOMED-CT	2.16.840.1.113883.3.526.3.1398 2.16.840.1.113883.3.526.2.1499	during [Encounter, Performed: Postpartum Care Visit]	
	Risk Category/Assessment	Risk Category/Assessment	Depression Screening Tools Related to Maternity Care	GROUPING LOINC	2.16.840.1.113883.3.526.3.1359 2.16.840.1.113883.3.526.2.1441	during [Encounter, Performed: Postpartum Care Visit]	Depression screening may include a self-reported validated depression screening tool (eg, PHQ-2, Beck Depression Inventory, Beck Depression Inventory for Primary Care, Edinburgh Postnatal Depression Scale (EPDS))
	Intervention	Intervention, Performed	Depression Screening-Procedure	GROUPING SNOMED-CT	2.16.840.1.113883.3.526.3.1360 2.16.840.1.113883.3.526.2.1442	during [Encounter, Performed: Postpartum Care Visit]	
	Attribute	Attribute: Result	Present "X"	n/a	n/a	n/a	This attribute can be applied to value set titled 'Depression Screening Tools Related to Maternity Care' or 'Depression Screening-Procedure'
	Condition / Diagnosis / Problem	Diagnosis, Active	Gestational Diabetes	GROUPING ICD-9-CM ICD-10-CM SNOMED-CT	2.16.840.1.113883.3.526.3.1399 2.16.840.1.113883.3.526.2.1500 2.16.840.1.113883.3.526.2.1501 2.16.840.1.113883.3.526.2.1502	<= 44 weeks starts before or during [Attribute, stop datetime: Date of Delivery]	It is expected that only those with 'Gestational Diabetes' will receive the 'Gestational Diabetes Screening' during a Postpartum Care Visit.
	Laboratory Test	Laboratory Test, Result	Gestational Diabetes Screening	GROUPING LOINC	2.16.840.1.113883.3.526.3.1350 2.16.840.1.113883.3.526.2.1424	during [Encounter, Performed: Postpartum Care Visit]	This value set will include: Fasting Glucose Test, 2-Hour Postprandial Glucose Test, Oral Glucose Tolerance Test (OGTT), 1-Hour Glucose Screen or a hemoglobin level. At least one of the listed tests must be performed to meet this data element.
	Attribute	Attribute: Result	Present "X"	n/a	n/a	n/a	This attribute can be applied to value set titled 'Gestational Diabetes Screening'
	Intervention	Intervention, Performed	Family and Contraceptive Planning	GROUPING HCPCS SNOMED-CT	2.16.840.1.113883.3.526.3.1400 2.16.840.1.113883.3.526.2.1503 2.16.840.1.113883.3.526.2.1504	during [Encounter, Performed: Postpartum Care Visit]	
	Device	Device, Order	Barrier Method Contraceptives	GROUPING SNOMED-CT	2.16.840.1.113883.3.526.3.1402 2.16.840.1.113883.3.526.2.1506	during [Encounter, Performed: Postpartum Care Visit]	
Medication	Medication, Order	Hormonal Contraceptives	GROUPING RxNorm	2.16.840.1.113883.3.526.3.1401 2.16.840.1.113883.3.526.2.1505	during [Encounter, Performed: Postpartum Care Visit]		
Denominator Exceptions	No Valid Denominator Exceptions						

*The Quality Data Model (QDM), Version 2.1, was developed by National Quality Forum (NQF).

Measure Performance Rate Calculation:

$$\frac{N}{(D - EXCL - EXCEP)} = \text{Performance Rate}$$

(D- EXCL – EXCEP)

The PCPI strongly recommends that exception rates also be computed and reported alongside performance rates as follows:

Measure Exception Rate Calculation:

$$\frac{EXCEP}{(D - EXCL)} = \text{Exception Rate}$$

Exception Types:

EXCEP= E1 (Medical Exceptions) + E2 (Patient Exceptions) + E3 (System Exceptions)

For patients who have more than one valid exception, only one exception should be counted when calculating the exception rate.

<p>Initial Patient Population (IPP)</p> <p>Definition: The group of patients that a set of performance measures is designed to address; usually focused on a specific clinical condition (e.g., coronary artery disease, asthma). For example, a patient aged 18 years and older with a diagnosis of CAD who has at least 2 visits during the measurement period.</p>	<p>Denominator (D)</p> <p>Definition: The specific group of patients for inclusion in a specific performance measure based on specific criteria (e.g., patient's age, diagnosis, prior MI). In some cases, the denominator may be identical to the initial patient population.</p>	<p>Exclusions (EXCL)</p> <p>Definition: The specific group of patients who should be subtracted from the measure population and denominator before determining if the numerator criteria are met.</p>	<p>Numerator (N)</p> <p>Definition: The group of patients in the denominator for whom a process or outcome of care occurs (e.g., flu vaccine received).</p>	<p>Exceptions (EXCEP)</p> <p>Definition: The valid reasons why patients who are included in the denominator population did not receive a process or outcome of care (described in the numerator). Patients may have Exceptions for medical reasons (e.g., patient has an egg allergy so they did not receive flu vaccine); patient reasons (e.g., patient declined flu vaccine); or system reasons (e.g., patient did not receive flu Vaccine due to vaccine shortage). These cases are subtracted from the denominator population for the performance calculation, however the number of patients with valid exceptions should be calculated and reported. This group of patients constitutes the Exception reporting population – patients for whom the numerator was not achieved and a there is a valid Exception.</p>
<p>Find the patients who meet the Initial Patient Population criteria (IPP)</p>	<p>Find the patients who qualify for the Denominator (D): From the patients within the Patient Population criteria (IPP) select those people who meet Denominator selection criteria. (In some cases the IPP and D are identical).</p>	<p>Find the patients who qualify for the Exclusion: (EXCL): From the patients within the Denominator criteria, select those patients who meet Exclusion criteria. The patients meeting exclusion criteria should be removed from the Denominator.</p>	<p>Find the patients who qualify for the Numerator (N): From the patients within the Denominator (D) criteria, select those people who meet Numerator selection criteria. Validate that the number of patients in the numerator is less than or equal to the number of patients in the denominator.</p>	<p>From the patients who did not meet the Numerator criteria, determine if the patient meets any criteria for the Exception (E1 + E2+E3). If they meet any criteria, they should be removed from the Denominator for performance calculation. As a point of reference, these cases are removed from the denominator population for the performance calculation, however the number of patients with valid exceptions should be calculated and reported.</p>

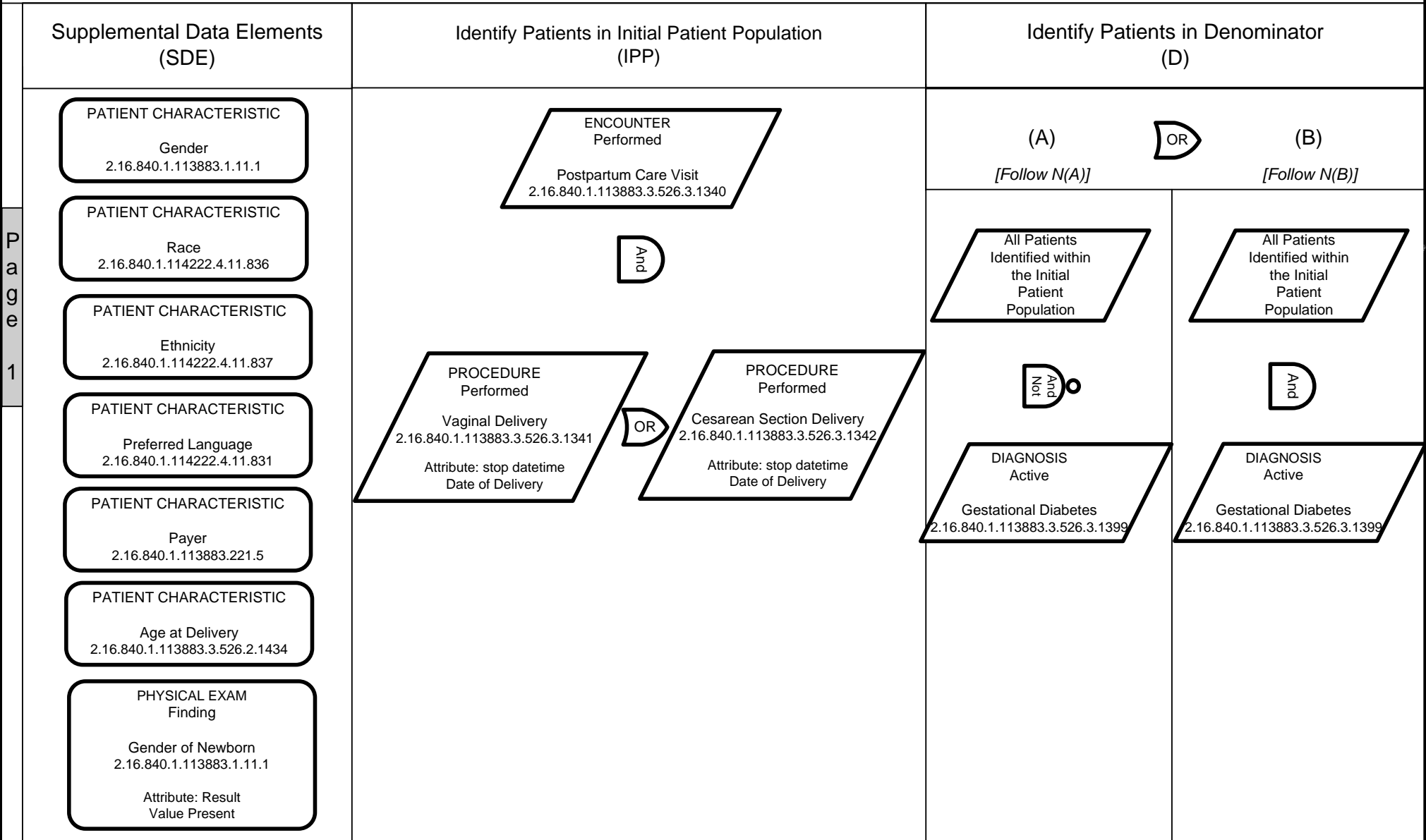
PCPI eSpecification

Measure Logic for Maternity Care: Post-Partum Follow-Up and Care Coordination

Measure Description: Percentage of patients, regardless of age, who gave birth during a 12-month period who were seen for post-partum care within 8 weeks of giving birth who received a breast feeding evaluation and education, post-partum depression screening, post-partum glucose screening for gestational diabetes patients, and family and contraceptive planning

Measurement Period: 12 Consecutive Months

PCPI Measure #: MC-10



Page 1

See Data Requirements Table for timing constraints and relationship between data elements.
If following the D(A) path, follow N(A) path; if following the D(B) path, follow N(B) path.

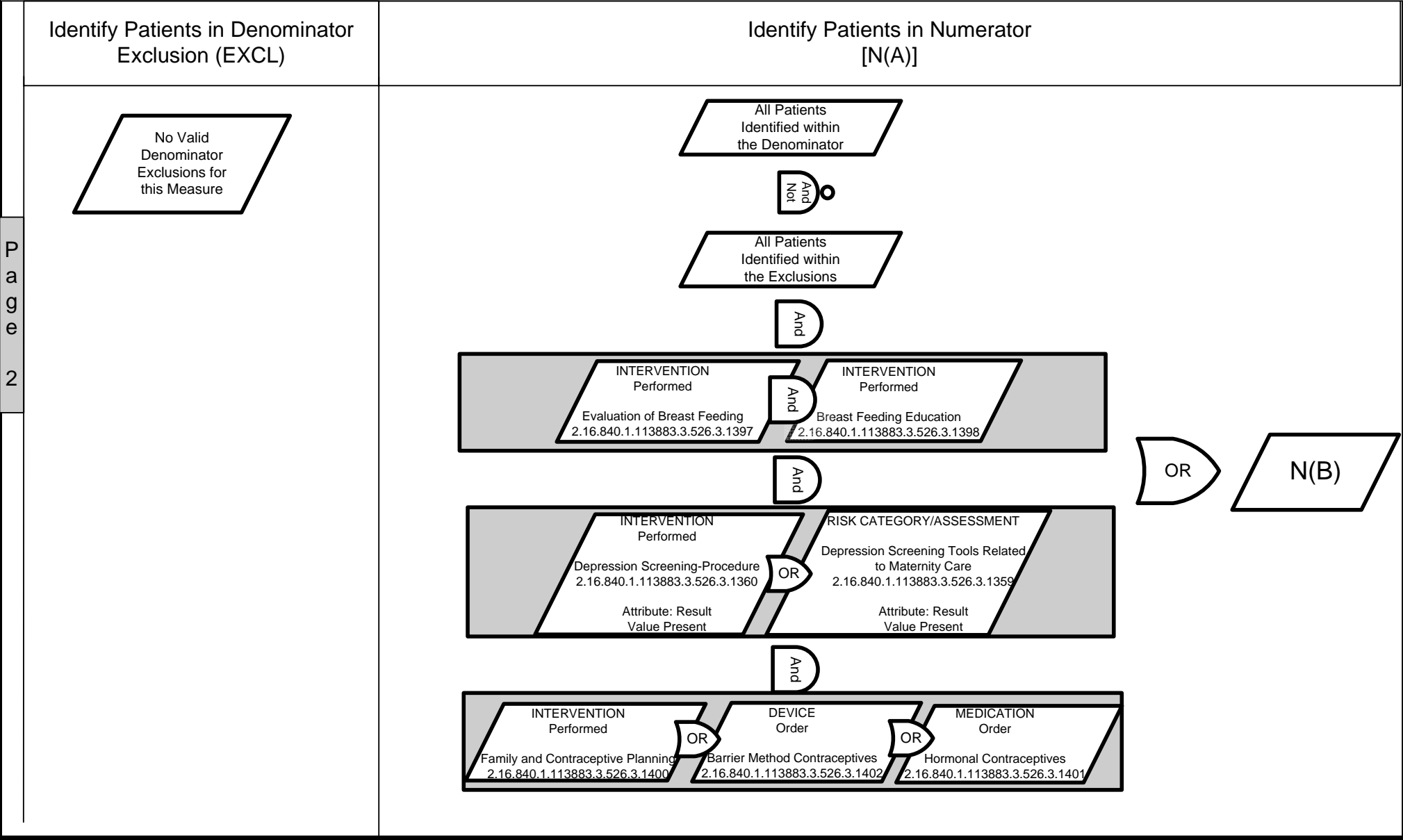
PCPI eSpecification

Measure Logic for Maternity Care: Post-Partum Follow-Up and Care Coordination

Measure Description: Percentage of patients, regardless of age, who gave birth during a 12-month period who were seen for post-partum care within 8 weeks of giving birth who received a breast feeding evaluation and education, post-partum depression screening, post-partum glucose screening for gestational diabetes patients, and family and contraceptive planning

Measurement Period: 12 Consecutive Months

PCPI Measure #: MC-10



Page 2

See Data Requirements Table for timing constraints and relationship between data elements.

If following the D(A) path, follow N(A) path; if following the D(B) path, follow N(B) path.

*Coded examples for exceptions are NOT intended to be an exhaustive list. Exceptions will vary for each patient and situation.

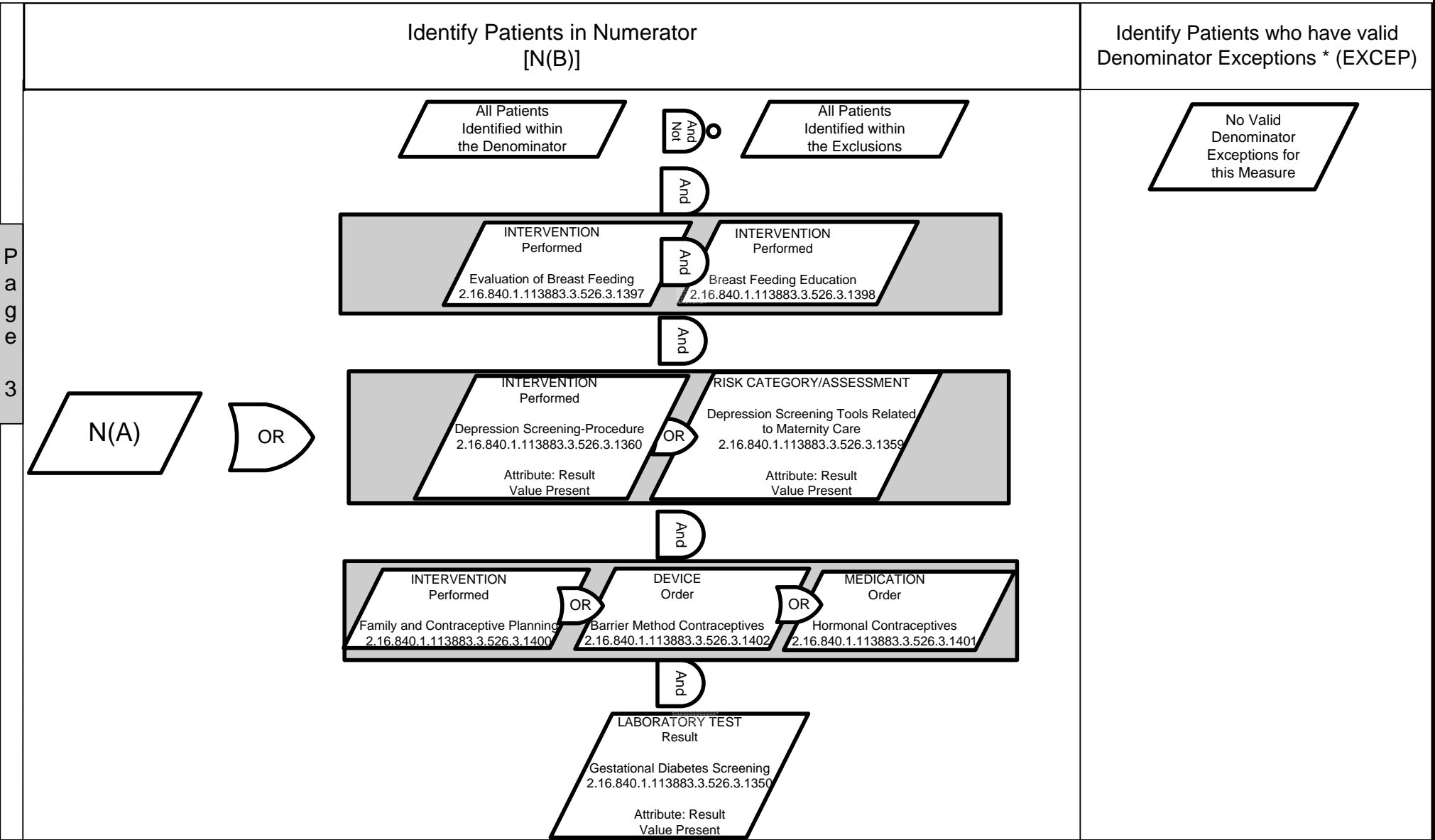
PCPI eSpecification

Measure Logic for Maternity Care: Post-Partum Follow-Up and Care Coordination

Measure Description: Percentage of patients, regardless of age, who gave birth during a 12-month period who were seen for post-partum care within 8 weeks of giving birth who received a breast feeding evaluation and education, post-partum depression screening, post-partum glucose screening for gestational diabetes patients, and family and contraceptive planning

Measurement Period: 12 Consecutive Months

PCPI Measure #: MC-10



P
a
g
e
3

See Data Requirements Table for timing constraints and relationship between data elements.

*Coded examples for exceptions are NOT intended to be an exhaustive list. Exceptions will vary for each patient and situation.