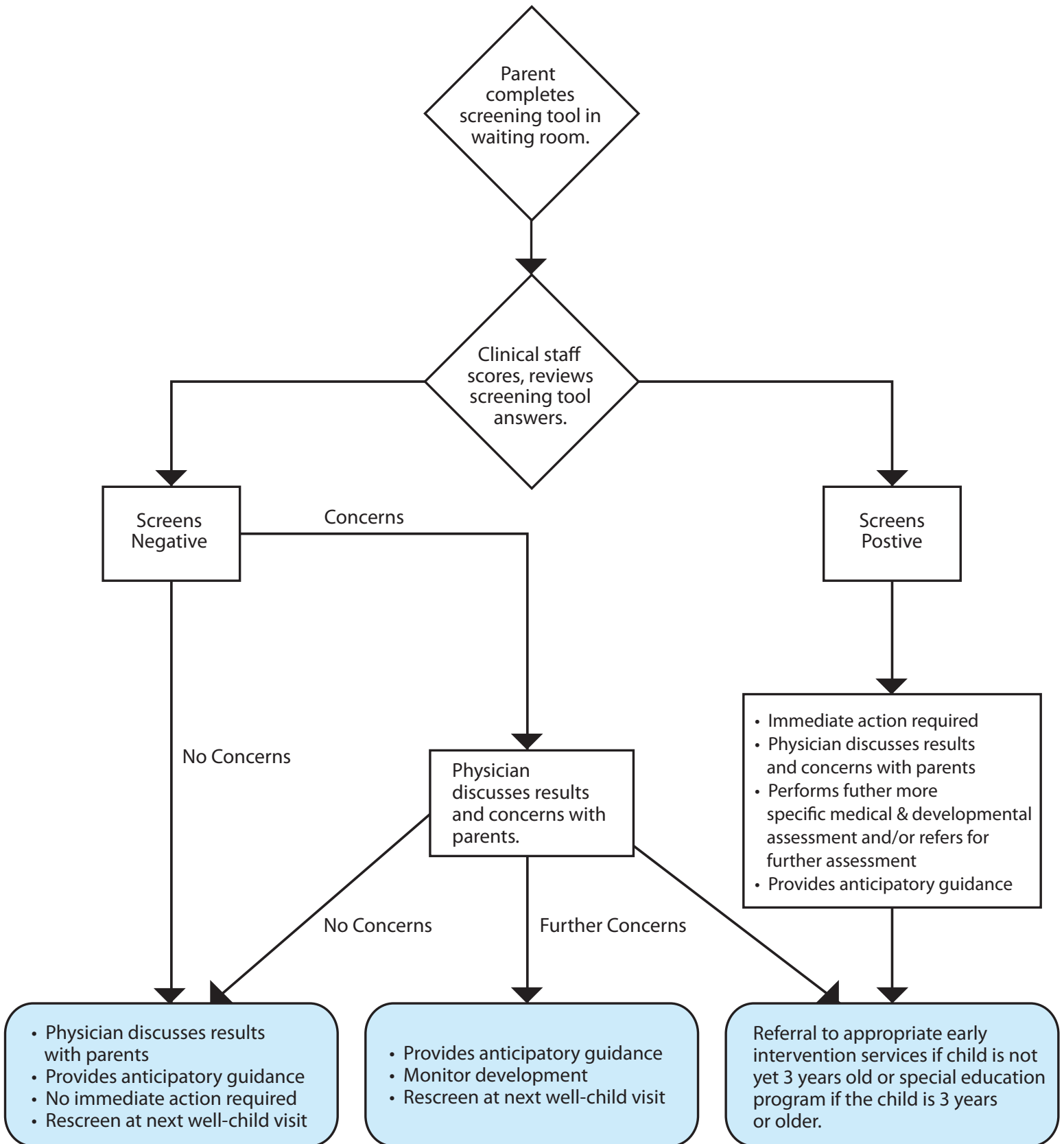


Pediatric Developmental Screening Flowchart



Attachment 5A.2 References

1. McCann CE, Yarbrough K. Snapshots: incorporating comprehensive developmental screening into programs and services for young children. Ounce of Prevention Fund. Accessed August 22, 2014. Retrieved from <http://www.ounceofprevention.org/news/pdfs/Snapshots.pdf>.
2. Meisels S, Atkins-Burnett, S. Developmental Screening in Early Childhood 5th Edition. National Association for the Education of Young Children. 2005. Washington, DC.
3. Korfmacher J. Infant, toddler, and early childhood mental health competencies: a comparison of systems. Zero to Three. 2014. Accessed August 22, 2014. Retrieved from <http://www.zerotothree.org/public-policy/pdf/infant-mental-health-report.pdf>
4. Hamilton S. Screening for developmental delay: reliable, easy-to-use tools. *J Fam Pract.* 2006;55(5):415-422.
5. King TM, Tandon SD, Macias MM, ..., Lipkin PH. Implementing developmental screening and referrals: lessons learned from a national project. *Pediatrics.* 2010;125(2):350-360.
6. Wahl E. Sharing screening results with families. Wisconsin Medical Home Webcast Series. Accessed August 22, 2014. Retrieved from <http://www.waisman.wisc.edu/connections/pdfs/webcast/SharingScreeningResultsFamilies.pdf>
7. Coker TR, Shaikh Y, Chung PJ. Parent-reported quality of preventive care for children at-risk for developmental delay. *Acad Pediatr.* 2012;12(5), 384-390.
8. Pizur-Barnekow K, Erickson S, Johnston M, Bass T, Lucinski L, Bleuel D. (2010). Early identification of developmental delays through surveillance, screening, and diagnostic evaluation. *Infants Young Child.* 2010;23(4):323-330.
9. Jennings DJ, Hanline MF. Developmental screening referrals: child and family factors that predict referral completion. *Topics Early Child Spec Educ.* 2013;33(2):102-111.
10. Bethell C, Reuland C, Schor E, Abrahms M, Halfon N. Rates of parent-centered developmental screening: disparities and links to services access. *Pediatrics.* 2011;128(1):146-155.