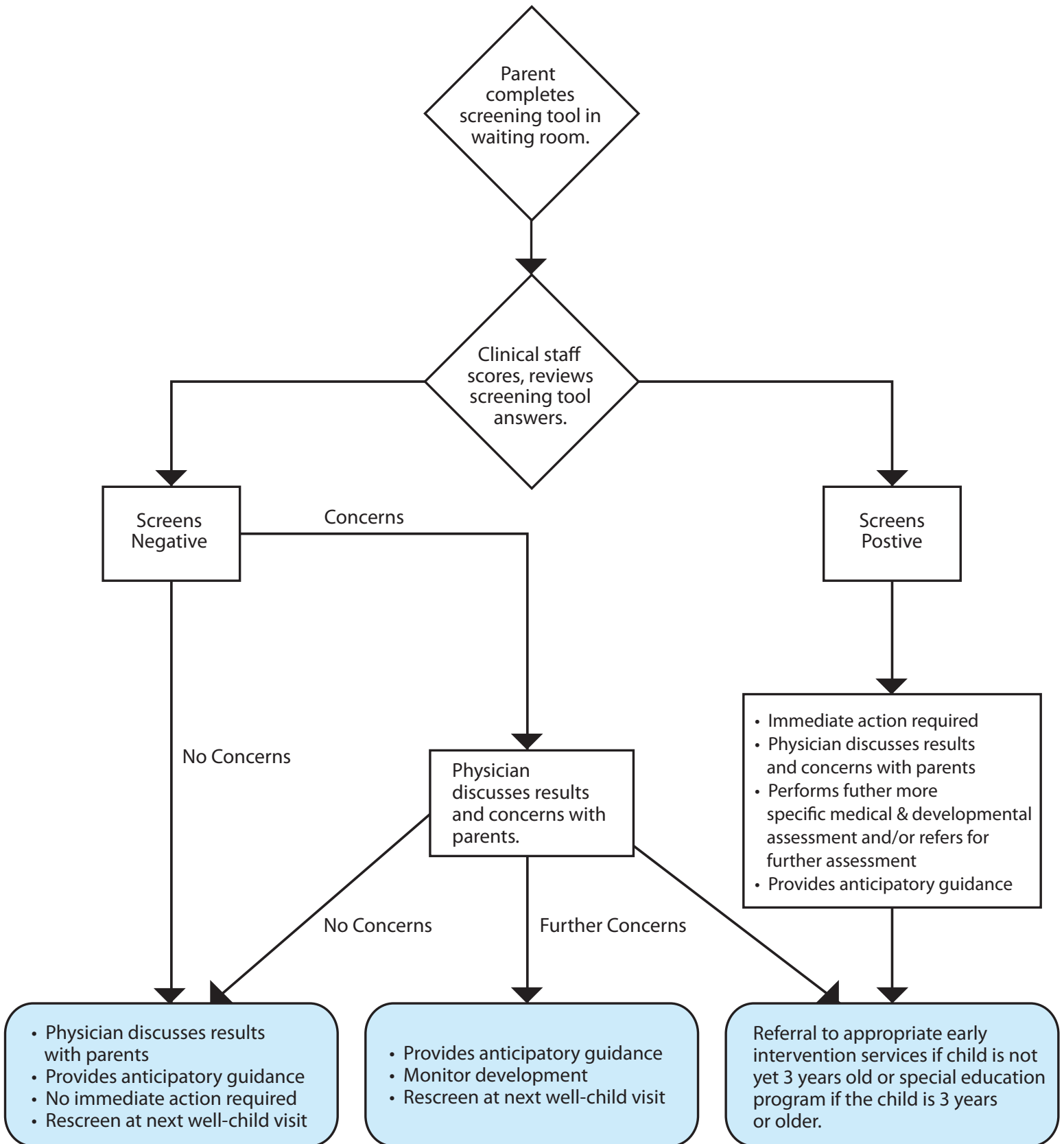


# Pediatric Developmental Screening Flowchart



## Attachment 5A.2 References

1. King TM, Tandon SD, Macias MM, ..., Lipkin PH. Implementing developmental screening and referrals: lessons learned from a national project. *Pediatrics*. 2010;125(2):350-360.
2. Medical Home Initiatives for Children with Special Needs Project Advisory Committee. The medical home. *Pediatrics*. 2008 (reaffirmed);122(2).
3. Tang BG, Feldman HM, Huffman LC, Kagawa KJ, Gould JB. Missed opportunities in the referral of high-risk infants to early intervention. *Pediatrics*. 2012;129(6):1027-1034.
4. King TM, Tandon SD, Macias MM, ..., Lipkin PH. Implementing developmental screening and referrals: lessons learned from a national project. *Pediatrics*. 2010;125(2):350-360.
5. Macy M, Marks K, Towle A. Missed, misused, or mismanaged: improving early detection systems to optimize child outcomes. *Topics Early Child Spec Educ*. 2014;34(2):94-105.
6. Tang BG, Feldman HM, Huffman LC, Kagawa KJ, Gould JB. Missed opportunities in the referral of high-risk infants to early intervention. *Pediatrics*. 2012;129(6):1027-1034.
7. Coker TR, Shaikh Y, Chung PJ. Parent-reported quality of preventive care for children at-risk for developmental delay. *Acad Pediatr*. 2012;12(5), 384-390.
8. Rydz D, Shevell MI, Majnemer A, Oskoui M. Developmental screening. *J Child Neurol*. 2005;20(1):4-21.
9. Pizur-Barnekow K, Erickson S, Johnston M, Bass T, Lucinski L, Bleuel D. (2010). Early identification of developmental delays through surveillance, screening, and diagnostic evaluation. *Infants Young Child*.2010;23(4):323-330.
10. Jennings DJ, Hanline MF. Developmental screening referrals: child and family factors that predict referral completion. *Topics Early Child Spec Educ*. 2013;33(2):102-111.