

Text Description for PCPI eSpecification

Clinical Topic	Maternity Care
Measure Title	Establishment of Gestational Age
Measure #	MC-1
Measure Description	Percentage of patients, regardless of age, who gave birth during a 12-month period seen at least once for prenatal care who had gestational age of the fetus estimated by ultrasound at or prior to 20 weeks (<i>20 weeks initially estimated by date of LMP</i>)
Measurement Period	12 consecutive months
Initial Patient Population	All patients, regardless of age, who gave birth during a 12-month period seen at least once for prenatal care
Denominator Statement	Equals Initial Patient Population
Denominator Exclusions	None
Numerator Statement	Patients who had gestational age of the fetus estimated by ultrasound at or prior to 20 weeks (<i>20 weeks initially estimated by date of LMP</i>)
Denominator Exceptions	None

MATERNITY CARE
Data Requirements for PCPI eSpecification
Measure #1 : Establishment of Gestational Age

Measure Component	QDM* Standard Category	QDM* Data Type	Value Set Name	Standard Terminology	OID	Constraints	Comments/Rationale
Supplemental Data Elements	Individual Characteristic	Patient Characteristic	Age at Delivery	LOINC	2.16.840.1.113883.3.526.2.1434	during [Attribute, stop datetime: Date of Delivery]	There are no restrictions on age for inclusion in the measure; this data element is included for result stratification to identify disparities.
	Individual Characteristic	Patient Characteristic	Gender	HL7 (2.16.840.1.113883.5.1)	2.16.840.1.113883.1.11.1	during measurement period	This data element is collected for the purpose of stratifying results in an effort to highlight disparities.
	Individual Characteristic	Patient Characteristic	Race	CDC	2.16.840.1.114222.4.11.836	during measurement period	This data element is collected for the purpose of stratifying results in an effort to highlight disparities.
	Individual Characteristic	Patient Characteristic	Ethnicity	CDC	2.16.840.1.114222.4.11.837	during measurement period	This data element is collected for the purpose of stratifying results in an effort to highlight disparities.
	Individual Characteristic	Patient Characteristic	Preferred Language	CDC	2.16.840.1.114222.4.11.831	during measurement period	This data element is collected for the purpose of stratifying results in an effort to highlight disparities.
	Individual Characteristic	Patient Characteristic	Payer	Source of Payment Typology	2.16.840.1.113883.221.5	during measurement period	This data element is collected for the purpose of stratifying results in an effort to highlight disparities.
Initial Patient Population	Measure Timing	n/a	Measurement Start Date	n/a	n/a	TBD by measure implementer	
	Measure Timing	n/a	Measurement End Date	n/a	n/a	TBD by measure implementer	
	Physical Exam	Physical Exam, Finding	Last Menstrual Period Date	GROUPING LOINC	2.16.840.1.113883.3.526.3.1343 2.16.840.1.113883.3.526.2.1415	<= 44 weeks starts before start of [Attribute, stop datetime: Date of Delivery]	The 'Last Menstrual Period Date' value (ie, date) should occur <= 44 weeks before the 'Date of Delivery'.
	Procedure	Procedure, Performed	Vaginal Delivery	GROUPING CPT SNOMED-CT	2.16.840.1.113883.3.526.3.1341 2.16.840.1.113883.3.526.2.1411 2.16.840.1.113883.3.526.2.1412	during measurement period	
	Procedure	Procedure, Performed	Cesarean Section Delivery	GROUPING CPT SNOMED-CT	2.16.840.1.113883.3.526.3.1342 2.16.840.1.113883.3.526.2.1413 2.16.840.1.113883.3.526.2.1414	during measurement period	
	Attribute	Attribute: stop datetime	Date of Delivery	n/a	n/a	n/a	This data element is the date associated with "Procedure, Performed: Vaginal Delivery" or "Procedure, Performed: Cesarean Section Delivery" collected for the purpose of a 'look back period'. The delivery is the trigger for the measure and the numerator quality actions will be limited to 44 weeks prior to delivery to associate the action with the reporting pregnancy.
	Encounter	Encounter, Performed	Prenatal Visit	GROUPING SNOMED-CT	2.16.840.1.113883.3.526.03.1264 2.16.840.1.113883.3.526.02.338	starts before start of [Procedure, Performed: Vaginal Delivery] <= 44 weeks; starts before start of [Procedure, Performed: Cesarean Section Delivery] <= 44 weeks;	
Denominator	Equals Initial Patient Population						
Denominator Exclusions	None						
Numerator	Diagnostic Study	Diagnostic Study, Result	Obstetrical Ultrasound, First Trimester	GROUPING LOINC	2.16.840.1.113883.3.526.3.1344 2.16.840.1.113883.3.526.2.1416	<= 20 weeks starts after start of [Physical Exam, Finding: Last Menstrual Period Date]	To meet this numerator action, the 'Last Menstrual Period Date' value (ie, date) should be used for the purposes of constraining the performance of the ultrasound. If the ultrasound is performed within 20 weeks after the recorded Last Menstrual Period Date, the patient meets the measure.
	Diagnostic Study	Diagnostic Study, Result	Obstetrical Ultrasound, Second Trimester	GROUPING LOINC	2.16.840.1.113883.3.526.3.1381 2.16.840.1.113883.3.526.2.1435	<= 20 weeks starts after start of [Physical Exam, Finding: Last Menstrual Period Date]	To meet this numerator action, the 'Last Menstrual Period Date' value (ie, date) should be used for the purposes of constraining the performance of the ultrasound. If the ultrasound is performed within 20 weeks after the recorded Last Menstrual Period Date, the patient meets the measure.
	Attribute	Attribute: Result	Gestational Age, Weeks	GROUPING LOINC	2.16.840.1.113883.3.526.3.1345 2.16.840.1.113883.3.526.2.1417	n/a	This data element is an 'attribute: result' because it must be captured via performance of an ultrasound. This attribute is applied to value set titled 'Obstetrical Ultrasound, First Trimester' and 'Obstetrical Ultrasound, Second Trimester' to indicate that the findings/result of gestational age must be derived from an obstetrical ultrasound final report.
	Attribute	Attribute: Result	Gestational Age, Days	GROUPING LOINC	2.16.840.1.113883.3.526.3.1346 2.16.840.1.113883.3.526.2.1418	n/a	This data element is an attribute: result because it must be captured via performance of an ultrasound. This attribute is applied to value set titled 'Obstetrical Ultrasound, First Trimester' and 'Obstetrical Ultrasound, Second Trimester' to indicate that the findings/result of gestational age must be derived from an obstetrical ultrasound final report.
	Attribute	Attribute: Status	Final Report	GROUPING SNOMED-CT	2.16.840.1.113883.3.526.03.1201 2.16.840.1.113883.3.526.02.796	n/a	This attribute is applied to value set titled 'Obstetrical Ultrasound, First Trimester' and 'Obstetrical Ultrasound, Second Trimester' to indicate that the result must be found on the 'Final Report'.
Denominator Exceptions	No Valid Denominator Exceptions						

*The Quality Data Model (QDM), Version 2.1, was developed by National Quality Forum (NQF).

Measure Performance Rate Calculation:

$$\frac{N}{(D - EXCL - EXCEP)} = \text{Performance Rate}$$

(D- EXCL – EXCEP)

The PCPI strongly recommends that exception rates also be computed and reported alongside performance rates as follows:

Measure Exception Rate Calculation:

$$\frac{EXCEP}{(D - EXCL)} = \text{Exception Rate}$$

Exception Types:

EXCEP= E1 (Medical Exceptions) + E2 (Patient Exceptions) + E3 (System Exceptions)

For patients who have more than one valid exception, only one exception should be counted when calculating the exception rate.

<p>Initial Patient Population (IPP)</p> <p>Definition: The group of patients that a set of performance measures is designed to address; usually focused on a specific clinical condition (e.g., coronary artery disease, asthma). For example, a patient aged 18 years and older with a diagnosis of CAD who has at least 2 visits during the measurement period.</p>	<p>Denominator (D)</p> <p>Definition: The specific group of patients for inclusion in a specific performance measure based on specific criteria (e.g., patient's age, diagnosis, prior MI). In some cases, the denominator may be identical to the initial patient population.</p>	<p>Exclusions (EXCL)</p> <p>Definition: The specific group of patients who should be subtracted from the measure population and denominator before determining if the numerator criteria are met.</p>	<p>Numerator (N)</p> <p>Definition: The group of patients in the denominator for whom a process or outcome of care occurs (e.g., flu vaccine received).</p>	<p>Exceptions (EXCEP)</p> <p>Definition: The valid reasons why patients who are included in the denominator population did not receive a process or outcome of care (described in the numerator). Patients may have Exceptions for medical reasons (e.g., patient has an egg allergy so they did not receive flu vaccine); patient reasons (e.g., patient declined flu vaccine); or system reasons (e.g., patient did not receive flu Vaccine due to vaccine shortage). These cases are subtracted from the denominator population for the performance calculation, however the number of patients with valid exceptions should be calculated and reported. This group of patients constitutes the Exception reporting population – patients for whom the numerator was not achieved and a there is a valid Exception.</p>
<p>Find the patients who meet the Initial Patient Population criteria (IPP)</p>	<p>Find the patients who qualify for the Denominator (D): From the patients within the Patient Population criteria (IPP) select those people who meet Denominator selection criteria. (In some cases the IPP and D are identical).</p>	<p>Find the patients who qualify for the Exclusion: (EXCL): From the patients within the Denominator criteria, select those patients who meet Exclusion criteria. The patients meeting exclusion criteria should be removed from the Denominator.</p>	<p>Find the patients who qualify for the Numerator (N): From the patients within the Denominator (D) criteria, select those people who meet Numerator selection criteria. Validate that the number of patients in the numerator is less than or equal to the number of patients in the denominator.</p>	<p>From the patients who did not meet the Numerator criteria, determine if the patient meets any criteria for the Exception (E1 + E2+E3). If they meet any criteria, they should be removed from the Denominator for performance calculation. As a point of reference, these cases are removed from the denominator population for the performance calculation, however the number of patients with valid exceptions should be calculated and reported.</p>

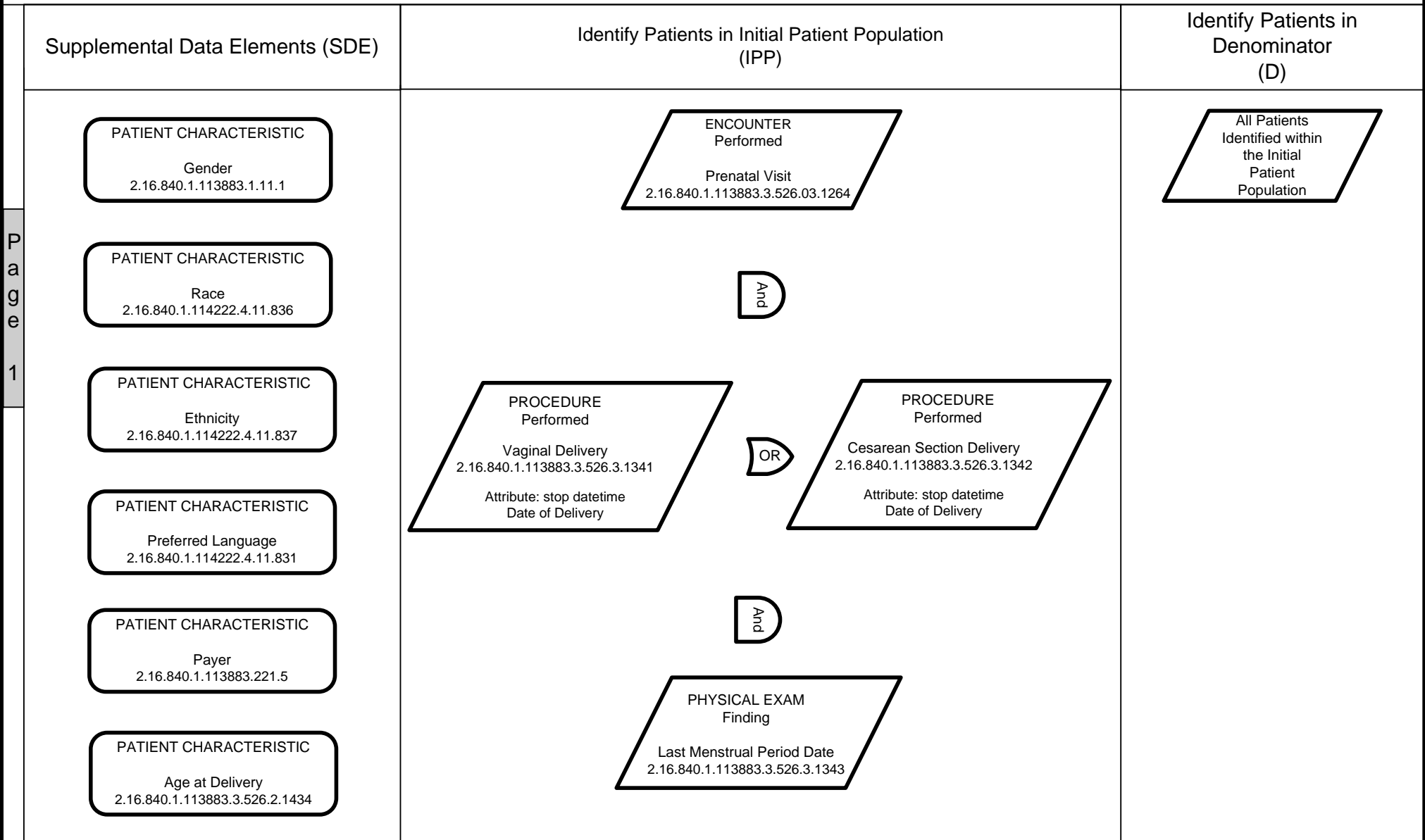
PCPI eSpecification

Measure Logic for Maternity Care: Establishment of Gestational Age

Measure Description: Percentage of patients, regardless of age, who gave birth during a 12-month period seen at least once for prenatal care who had gestational age of the fetus estimated by ultrasound at or prior to 20 weeks (20 weeks initially estimated by date of LMP)

Measurement Period: 12 Consecutive Months

PCPI Measure #: MC-1



See Data Requirements Table for timing constraints and relationship between data elements.

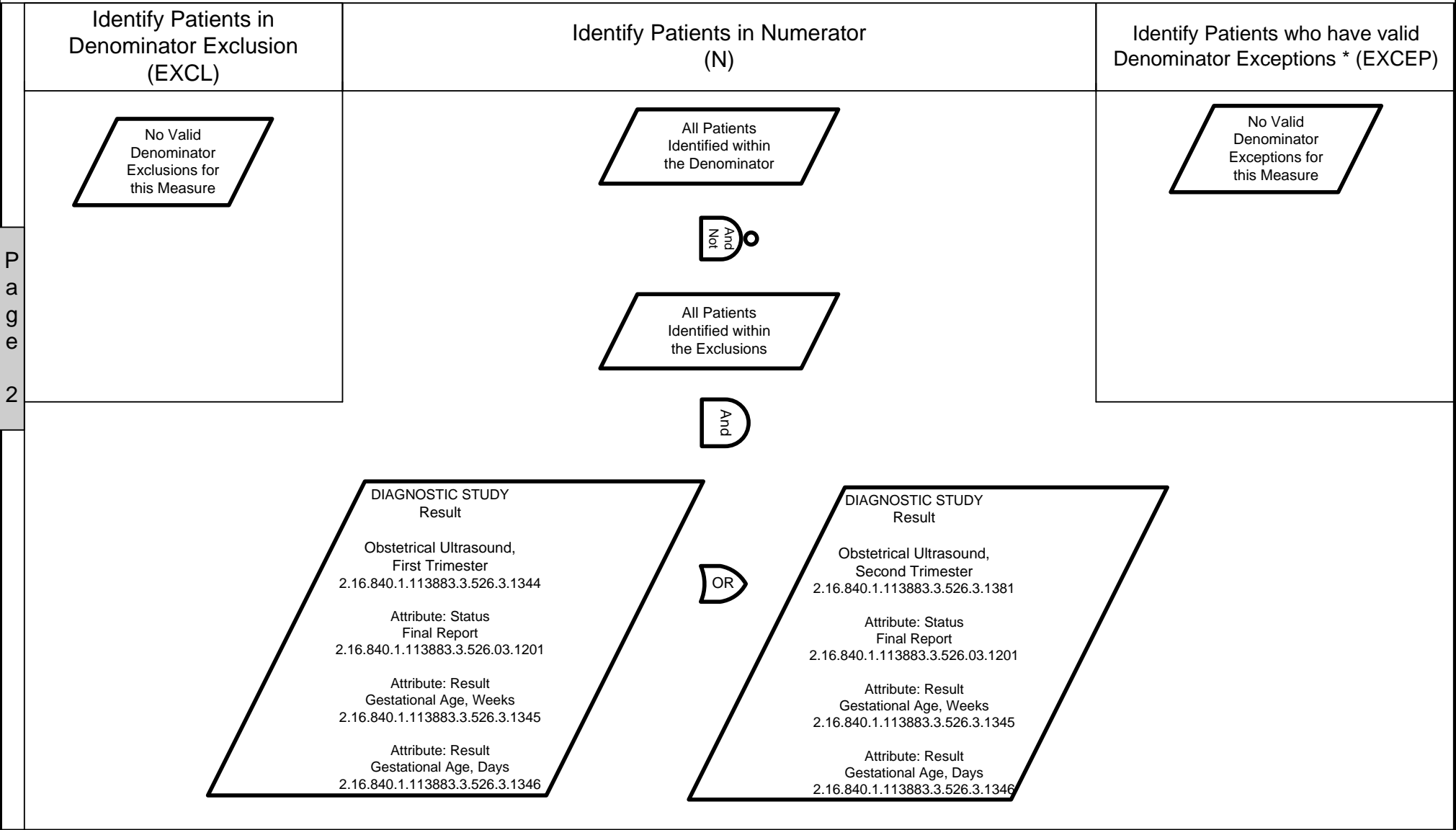
PCPI eSpecification

Measure Logic for Maternity Care: Establishment of Gestational Age

Measure Description: Percentage of patients, regardless of age, who gave birth during a 12-month period seen at least once for prenatal care who had gestational age of the fetus estimated by ultrasound at or prior to 20 weeks (*20 weeks initially estimated by date of LMP*)

Measurement Period: 12 Consecutive Months

PCPI Measure #: MC-1



See Data Requirements Table for timing constraints and relationship between data elements.

*Coded examples for exceptions are NOT intended to be an exhaustive list. Exceptions will vary for each patient and situation.