

Figure 1. Path Between the Measure Focus and Health Outcome

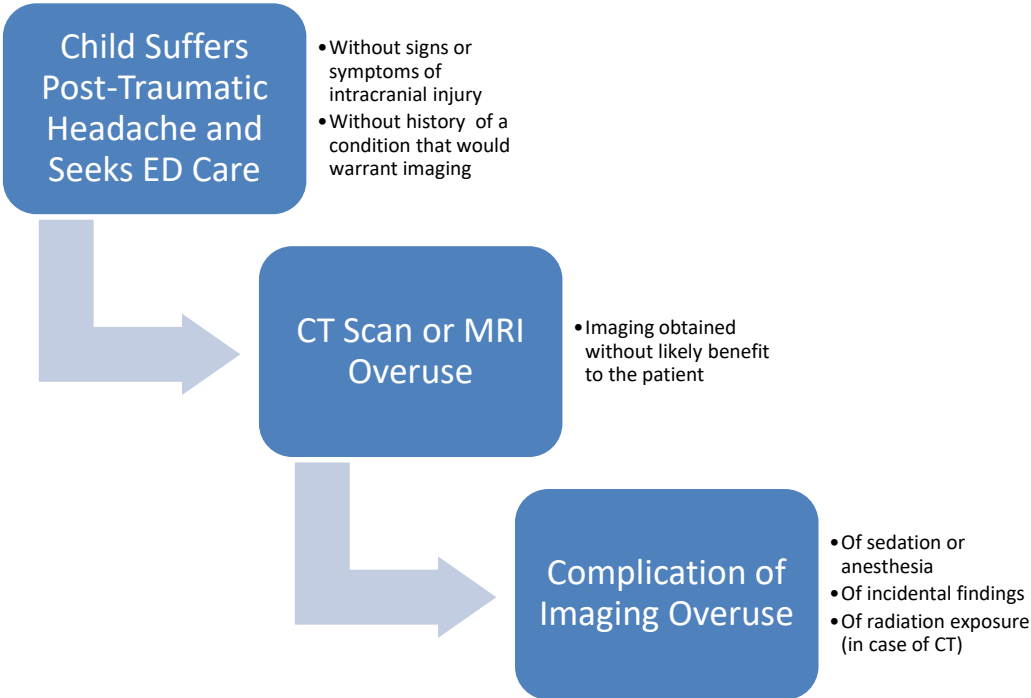


Figure 2. American College of Radiology – ACR Appropriateness Criteria

**American College of Radiology
ACR Appropriateness Criteria®**

Clinical Condition: Head Trauma — Child

Variant 1: Minor head injury (GCS >13) ≥2 years of age without neurologic signs or high risk factors (eg, altered mental status, clinical evidence of basilar skull fracture). Excluding nonaccidental trauma.

Radiologic Procedure	Rating	Comments	RRL*
CT head without contrast	3	This is a known low-yield procedure.	☻☻☻
MRI head without contrast	2		○
X-ray head	1		☻
CT head without and with contrast	1		☻☻☻☻
CT head with contrast	1		☻☻☻
CTA head with contrast	1		☻☻☻☻
MRI head without and with contrast	1		○
MRA head without contrast	1		○
MRA head without and with contrast	1		○
Arteriography cerebral	1		☻☻☻☻
US head	1		○
FDG-PET/CT head	1		☻☻☻☻
Tc-99m HMPAO SPECT head	1		☻☻☻☻
Rating Scale: 1,2,3 Usually not appropriate; 4,5,6 May be appropriate; 7,8,9 Usually appropriate			*Relative Radiation Level

Figure 3. American College of Radiology – Relative Radiation Level Designations

Relative Radiation Level Designations		
Relative Radiation Level*	Adult Effective Dose Estimate Range	Pediatric Effective Dose Estimate Range
○	0 mSv	0 mSv
☻	<0.1 mSv	<0.03 mSv
☻☻	0.1-1 mSv	0.03-0.3 mSv
☻☻☻	1-10 mSv	0.3-3 mSv
☻☻☻☻	10-30 mSv	3-10 mSv
☻☻☻☻☻	30-100 mSv	10-30 mSv
*RRL assignments for some of the examinations cannot be made, because the actual patient doses in these procedures vary as a function of a number of factors (eg, region of the body exposed to ionizing radiation, the imaging guidance that is used). The RRLs for these examinations are designated as "Varies".		

Note: These tables are reproduced from pages 1 and 10 of the American College of Radiology (ACR) Expert Panel on Pediatric Imaging: Ryan ME, Palasis S, Saigal G, et al. ACR Appropriateness Criteria: Head Trauma — Child. American College of Radiology, 2014. Available at: <https://acsearch.acr.org/docs/3083021/Narrative/> ; accessed June 30, 2015.

Reprinted with permission of the American College of Radiology. No other representation of this material is authorized without expressed, written permission from the American College of Radiology. Refer to the ACR website at ACR Appropriateness Criteria® - American College of Radiology for the most current and complete version of the ACR Appropriateness Criteria®.