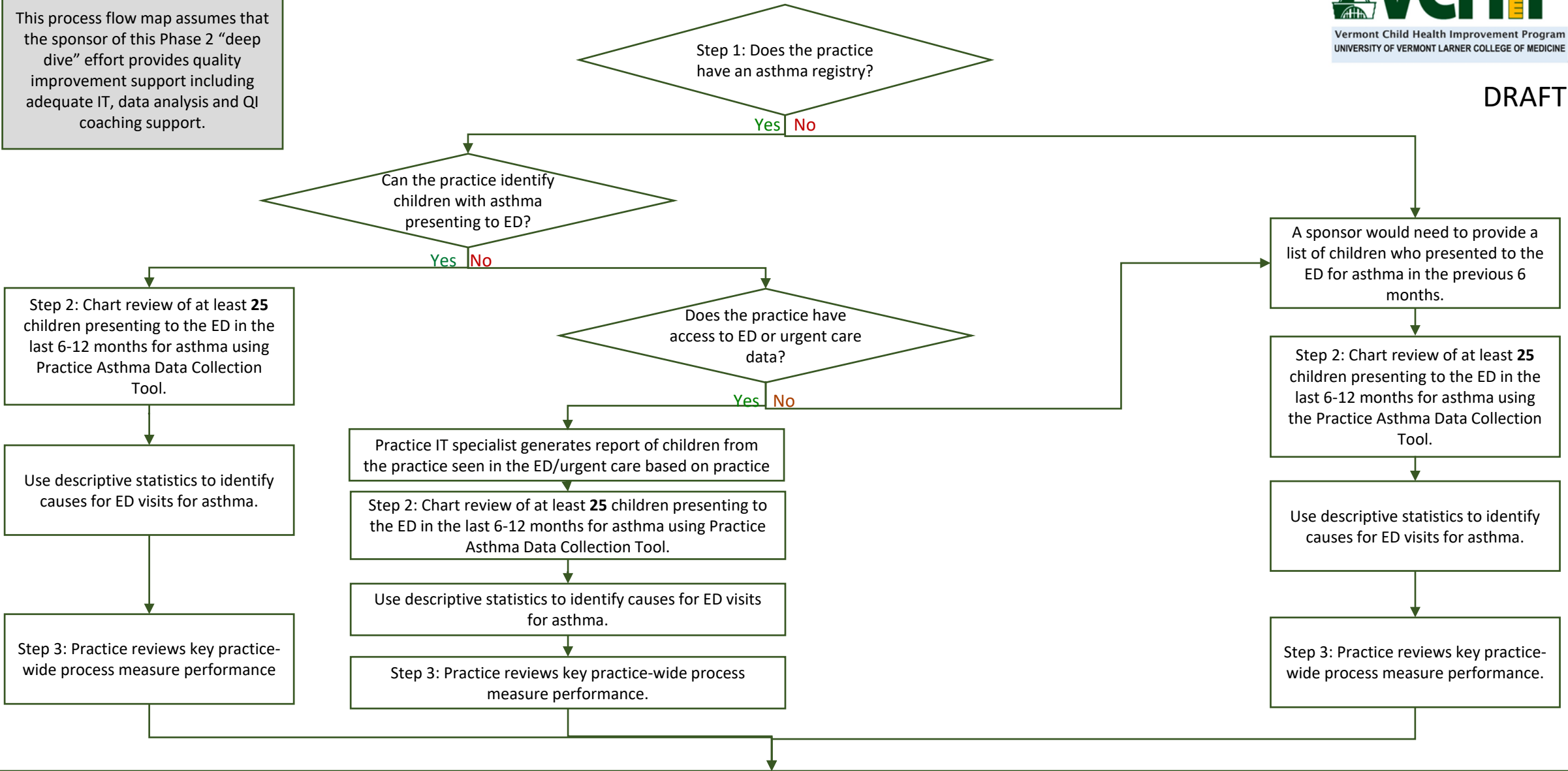


Phase 2 “Deep Dive”: Practice participation to decrease ED rates for patients with asthma (based on using the PQMP asthma measure)



DRAFT

This process flow map assumes that the sponsor of this Phase 2 “deep dive” effort provides quality improvement support including adequate IT, data analysis and QI coaching support.



Improvement team formed to identify SMART Aims and Measures and to initiate Quality Improvement activities.