

INSTRUCTIONS FOR USING THIS TOOL – DELETE THIS SLIDE BEFORE PRESENTATION

- *Use this PowerPoint presentation as a template for your presentation.*
- *Replace the charts with charts that you create with your data (use the Excel workbook from Tool B.3a for guidance) and replace the **red text** with your hospital's information.*

The Toolkit for Using the AHRQ Quality Indicators

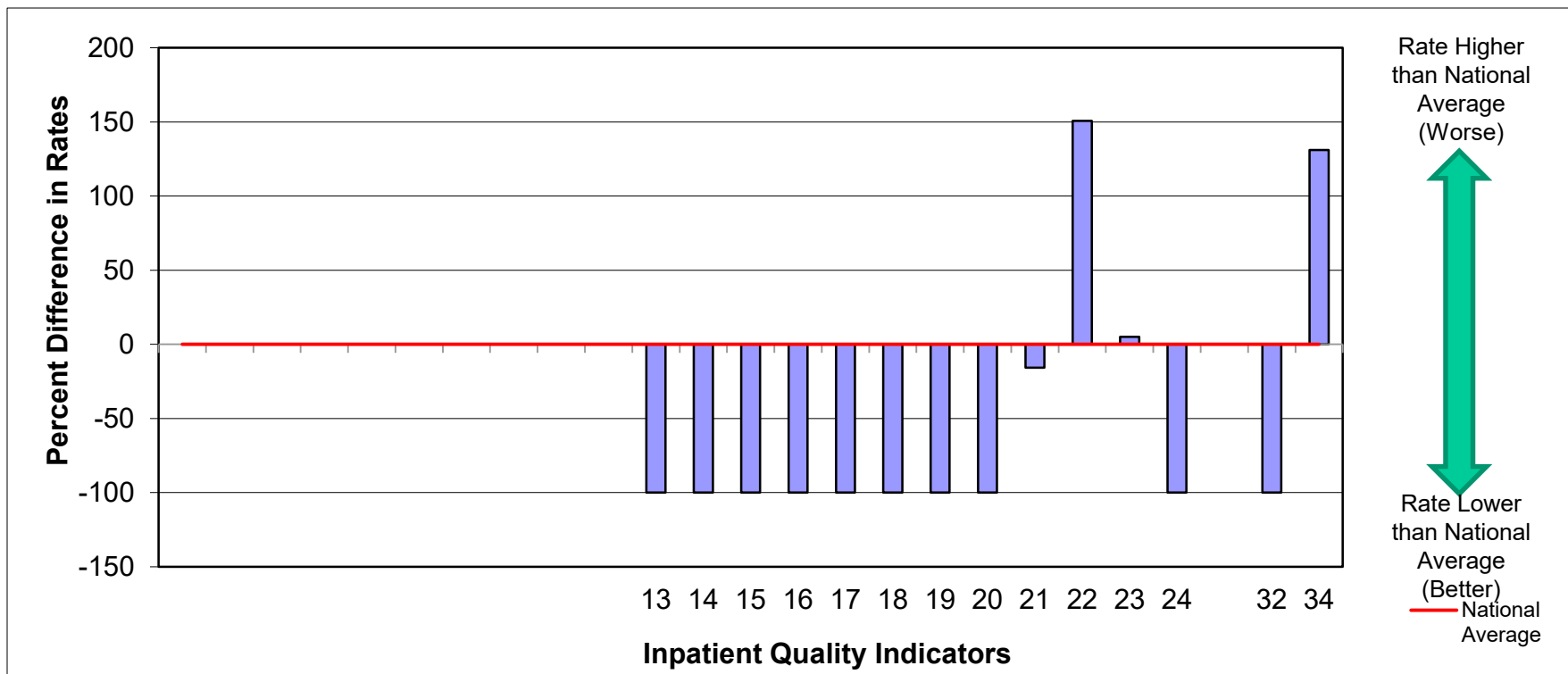
Results and Discussion of Data Analysis

How can the AHRQ QIs be used in quality assessment?

- AHRQ QIs can be used to flag potential problems in quality of care.
- AHRQ QIs can be used to assess performance and compare against peer hospitals.
- Examples of hospital use of AHRQ QIs in the literature have examined the impact of:
 - Health information technology on quality of care.
 - Hospital board quality committees on quality of care.
 - The effectiveness of nurse staffing on care delivered.

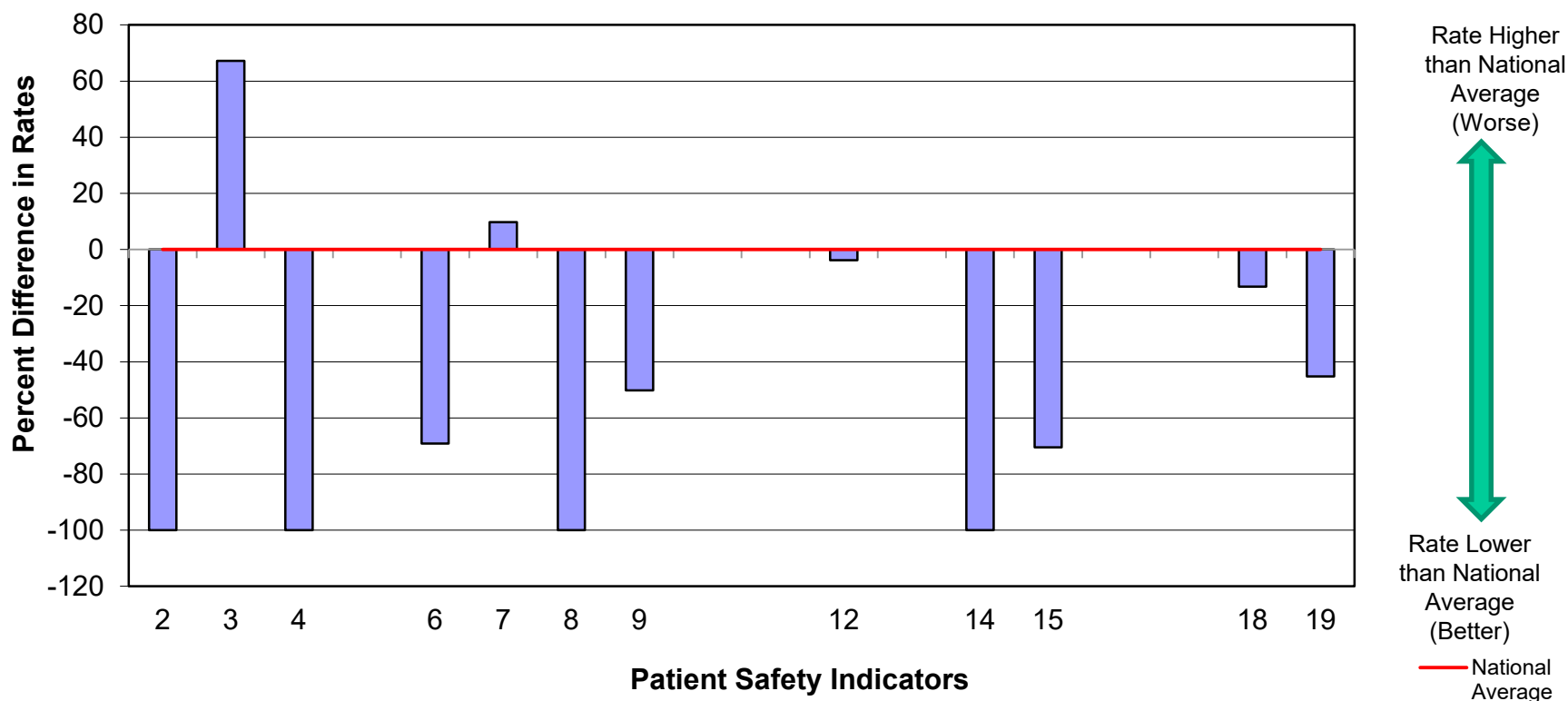
Source: www.qualityindicators.ahrq.gov/Default.aspx and *AHRQ Quality Indicator Toolkit Literature Review*.

Your Hospital's Performance Relative to National Averages



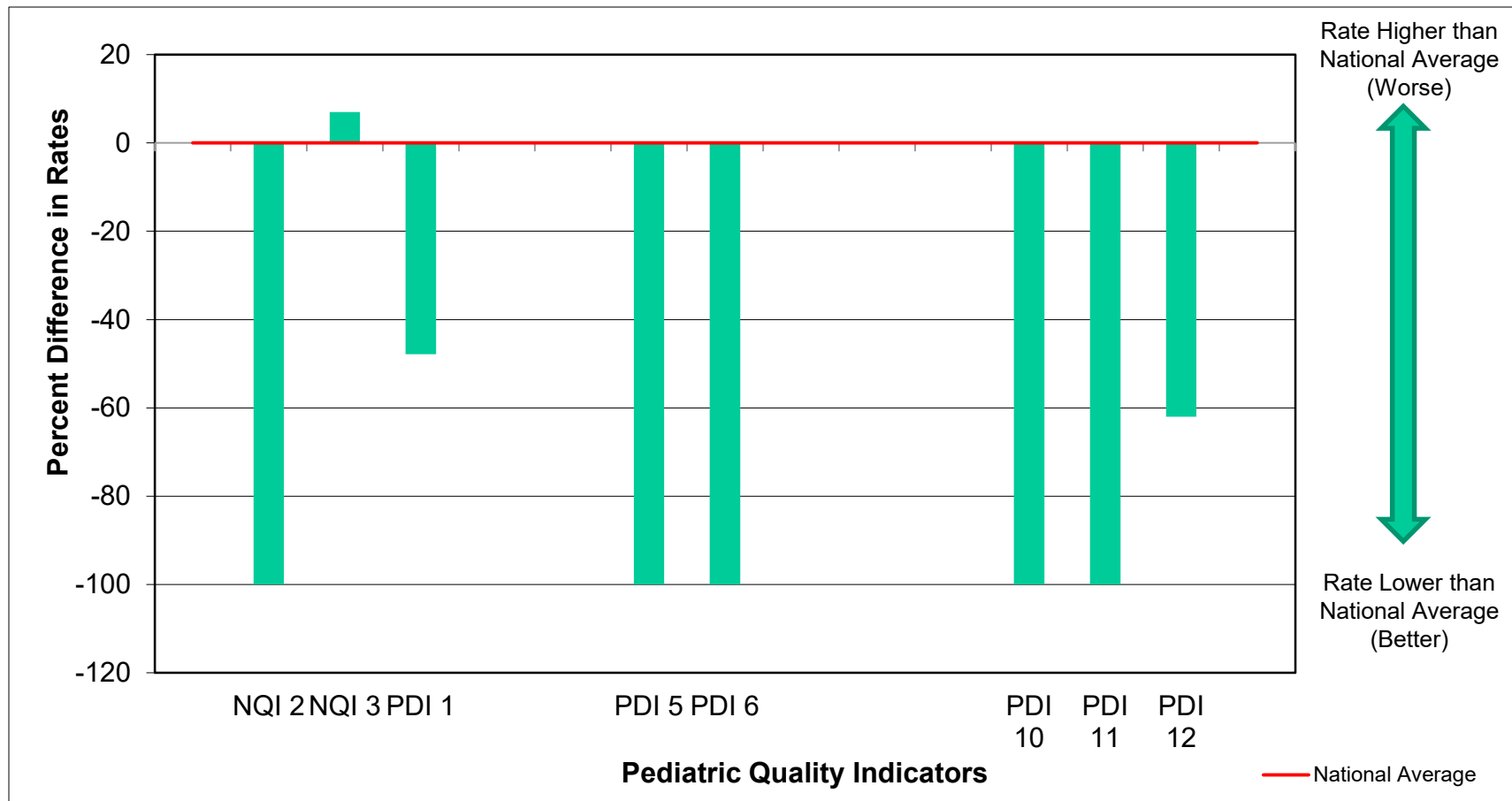
Relative to a sample of similar hospitals, **Your Hospital has similar or better performance on most of the IQIs.**

Your Hospital's Performance Relative to National Averages



Relative to a sample of similar hospitals, Your Hospital has similar or better performance on many of the PSIs. However, Pressure Ulcers (PSI 03) occur at higher rates than the national average – this may be an area where Your Hospital should focus quality improvement efforts.

Your Hospital's Performance Relative to National Averages



Relative to a sample of similar hospitals, **Your Hospital has similar or better performance on most of the PDIs.**

DELETE THIS SLIDE BEFORE PRESENTATION

- *In this example, we will examine the rates of Pressure Ulcers (PSI 03) and how this particular hospital performed over time.*
- *Determine which indicator(s) you would like to focus on, and fill in these slides based on that indicator and your hospital's data.*
- *Based on the information that you would like to present, you may choose not to use all of the slides available here.*

Indicators that Require Attention

- Based on a review of **Your Hospital's** performance on the PSIs, we have decided to focus on the following indicators:
 - **Pressure Ulcers (PSI 03)**
 -
 -
 -
 -

DELETE THIS SLIDE BEFORE PRESENTATION

- *You may want to include information about the indicator as background information.*
- *Go to www.qualityindicators.ahrq.gov/ or see the Fact Sheets in this toolkit (Tools A.1a, A.1b, A.1c) to obtain this information.*

A PSI Example: Pressure Ulcer (PSI 03)

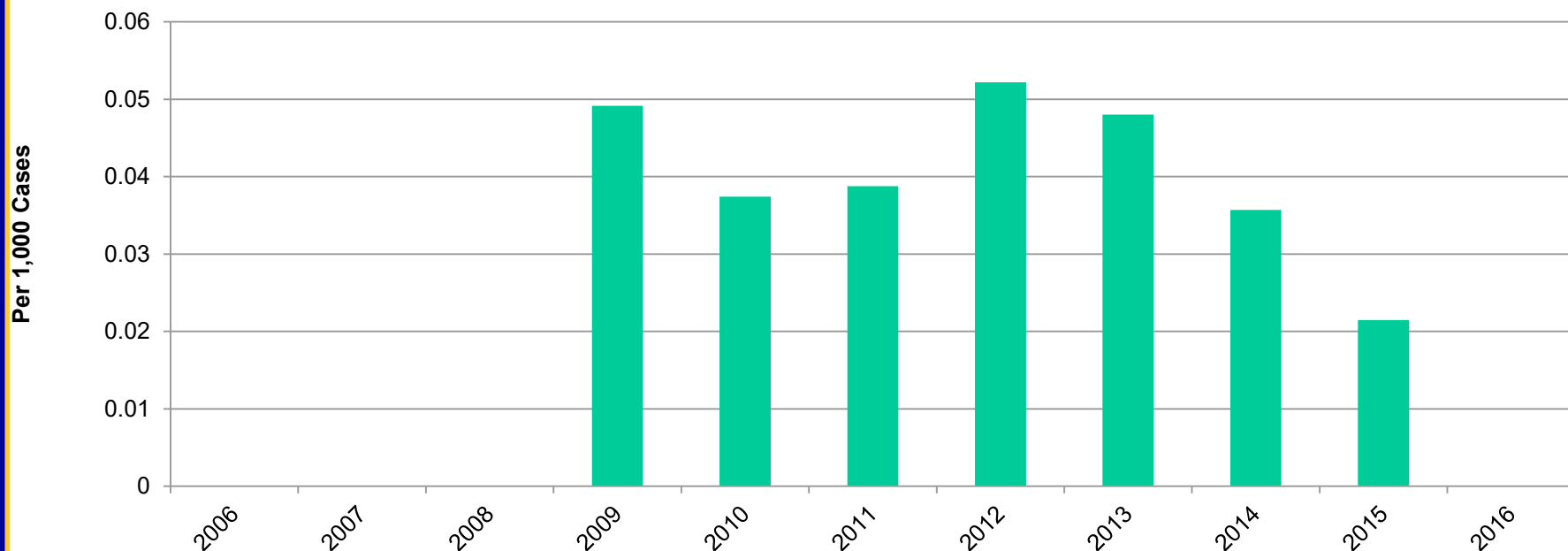
- Numerator: Discharges, among cases meeting the inclusion and exclusion rules for the denominator, with any secondary ICD-10-CM diagnosis codes for pressure ulcer and any secondary ICD-10-CM diagnosis codes for pressure ulcer stage III or IV (or unstageable).
- Denominator: Surgical or medical discharges, for patients ages 18 years and older. Surgical and medical discharges are defined by specific DRG or MS-DRG codes.
- ***DELETE THIS TEXT BEFORE PRESENTATION:
Replace this information with information about your chosen indicators. Copy this slide and repeat as necessary.***

ICD-10-CM = International Classification of Diseases, 10th Revision; DRG = diagnosis-related group.

Source: www.qualityindicators.ahrq.gov/Modules/PSI_TechSpec.aspx.

Comparing Performance Over Time

Examining Observed Rates of Pressure Ulcers (PSI 03)

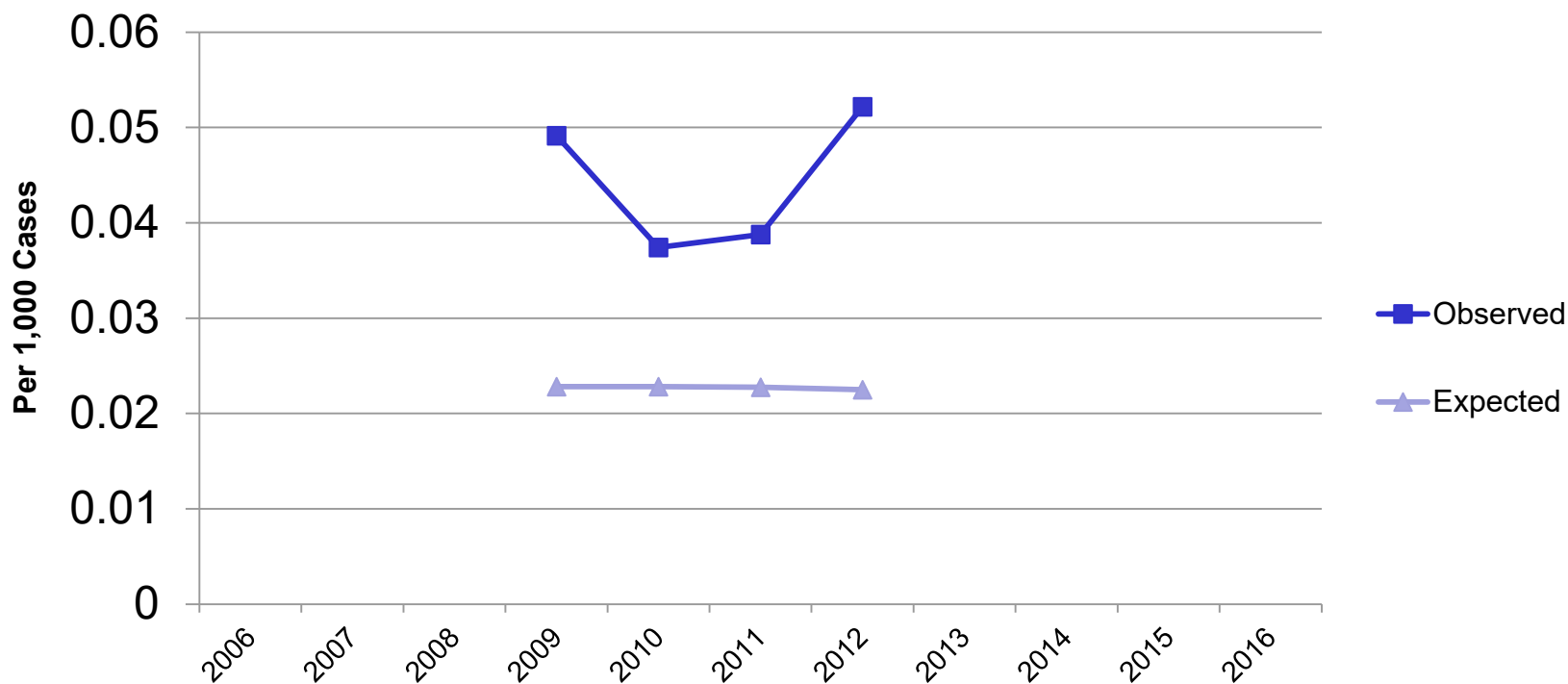


*Note: Use caution comparing rates before and after 2014. Rates before the 4th quarter of 2014 are calculated using ICD-9-CM diagnosis codes; rates calculated during the 4th quarter of 2014 and later use ICD-10-CM. The rates should be similar but may not yield a perfect comparison between years.

Slides below are only applicable for ICD-9 versions of the software. Currently the ICD-10 software does not calculate expected, risk-adjusted, or smoothed rates, but will in the future.

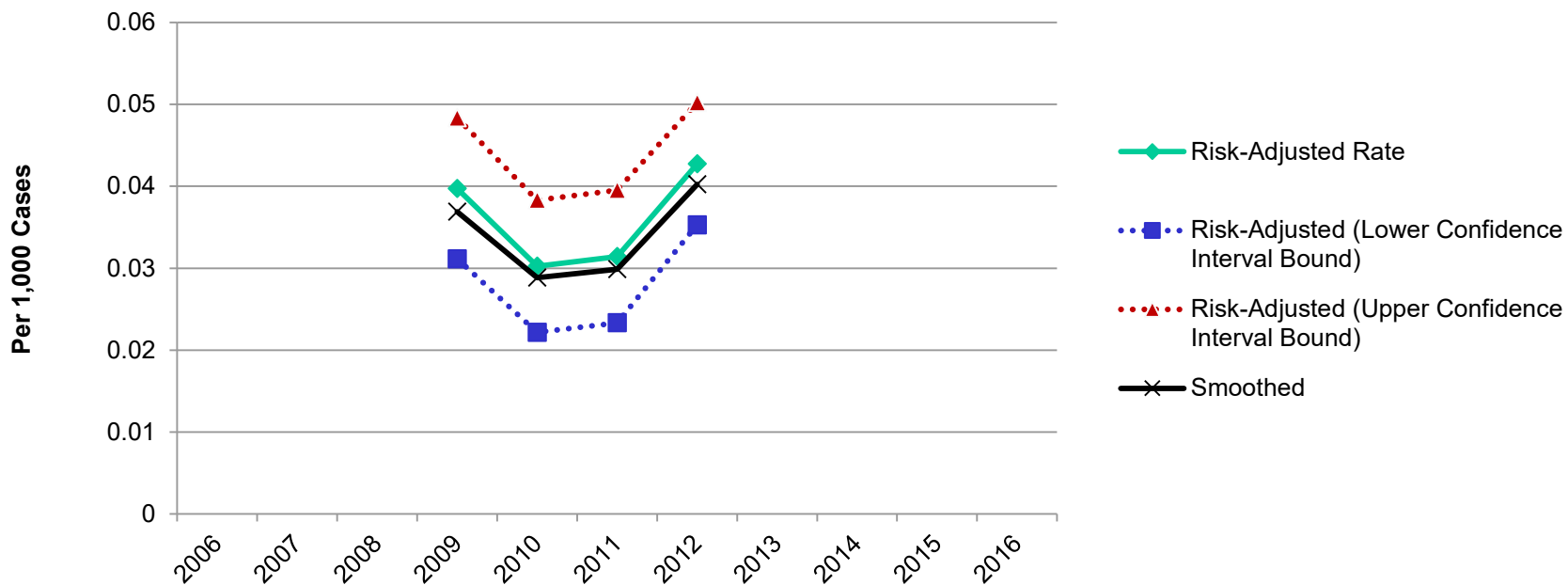
Comparing Observed Performance to Expected Performance Over Time

Comparing Observed Rates of Pressure Ulcers (PSI 03) to Expected Rates



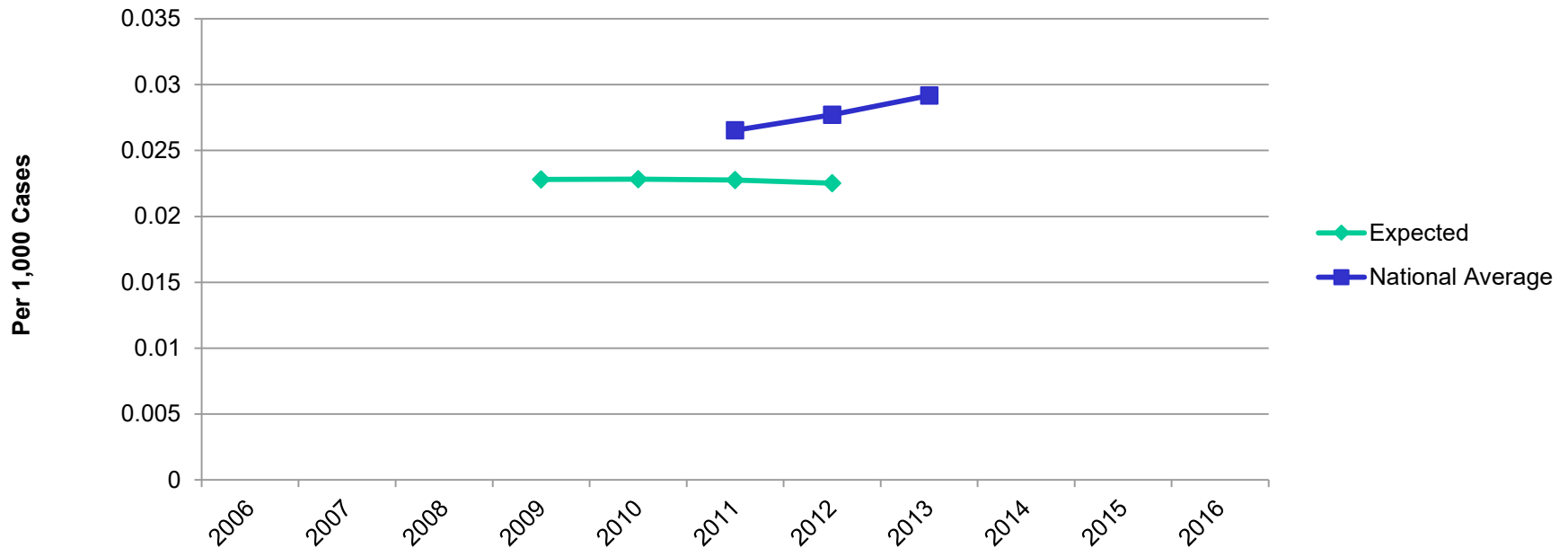
Comparing Risk-Adjusted and Smoothed Rates Over Time

Risk-Adjusted and Smoothed Rates of **Pressure Ulcers (PSI 03)**



Evaluating Case Mix Relative to Other Hospitals

Comparing Expected Rates of **Pressure Ulcers (PSI 03)** to National Average Rates To Compare Case Mix



Comparing Hospital's Performance to National Performance Over Time

Comparing Risk-Adjusted Rates of **Pressure Ulcers (PSI 03)** to National Average Rates

