

AHRQ's Surveys on Patient Safety Culture® (SOPS®) Program



Caren Ginsberg, Ph.D.

Center for Quality Improvement and Patient Safety, AHRQ

Agency for Healthcare Research and Quality



- AHRQ is:
 - ▶ A research and science-based agency of the US Department of Health and Human Services that supports evidence-based practices.
 - ▶ The lead Federal agency charged with improving the safety and quality of America's healthcare system.

- AHRQ is not:
 - ▶ A regulatory agency. AHRQ can not require the use of our tools and products.

AHRQ Patient Safety Priorities



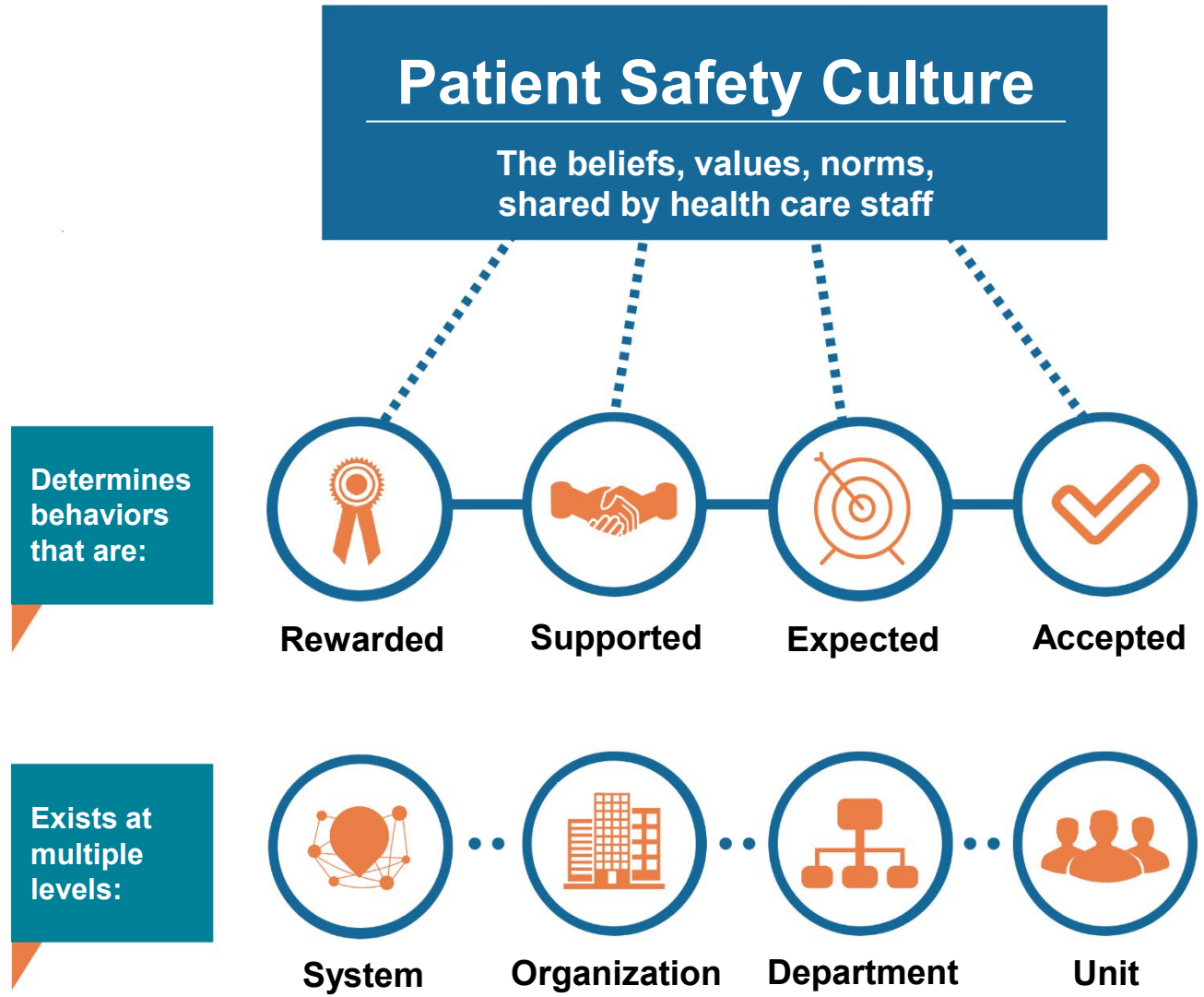
- Focus on areas of greatest impact
- Extend patient safety improvement to all settings
- Prevent HAIs, reduce antibiotic resistance
- Build capacity in the health care system to accelerate safety improvements
- Improve communication and engagement between clinicians and patients
- Make the safe thing the easy thing to do

AHRQ's SOPS Program



- SOPS surveys are used by healthcare organizations to assess provider and staff perceptions about how their organizational culture supports patient safety.
- Initiated and funded by AHRQ since 2001 to advance the understanding, measurement, and improvement of patient safety culture within healthcare settings
- Develops validated surveys and measures
- Supports voluntary data submission to SOPS databases
- Conducts research to further the measurement and understanding of patient safety culture
- Develops tools to improve safety culture in facilities

What is Patient Safety Culture?



Why should you use the AHRQ SOPS Surveys?



1. Developed with extensive input from experts and staff



2. Comprehensively tested, reliable, and valid instruments



3. Widely used, allowing comparisons to other organizations



4. Actionable for improvement purposes



5. Free technical assistance and resources available

How can you use the SOPS surveys?



Assess
patient safety
culture



Raise staff
awareness
about patient
safety



Identify
strengths
and areas for
improvement



Examine
trends over
time



Evaluate the
impact of
patient safety
initiatives

